

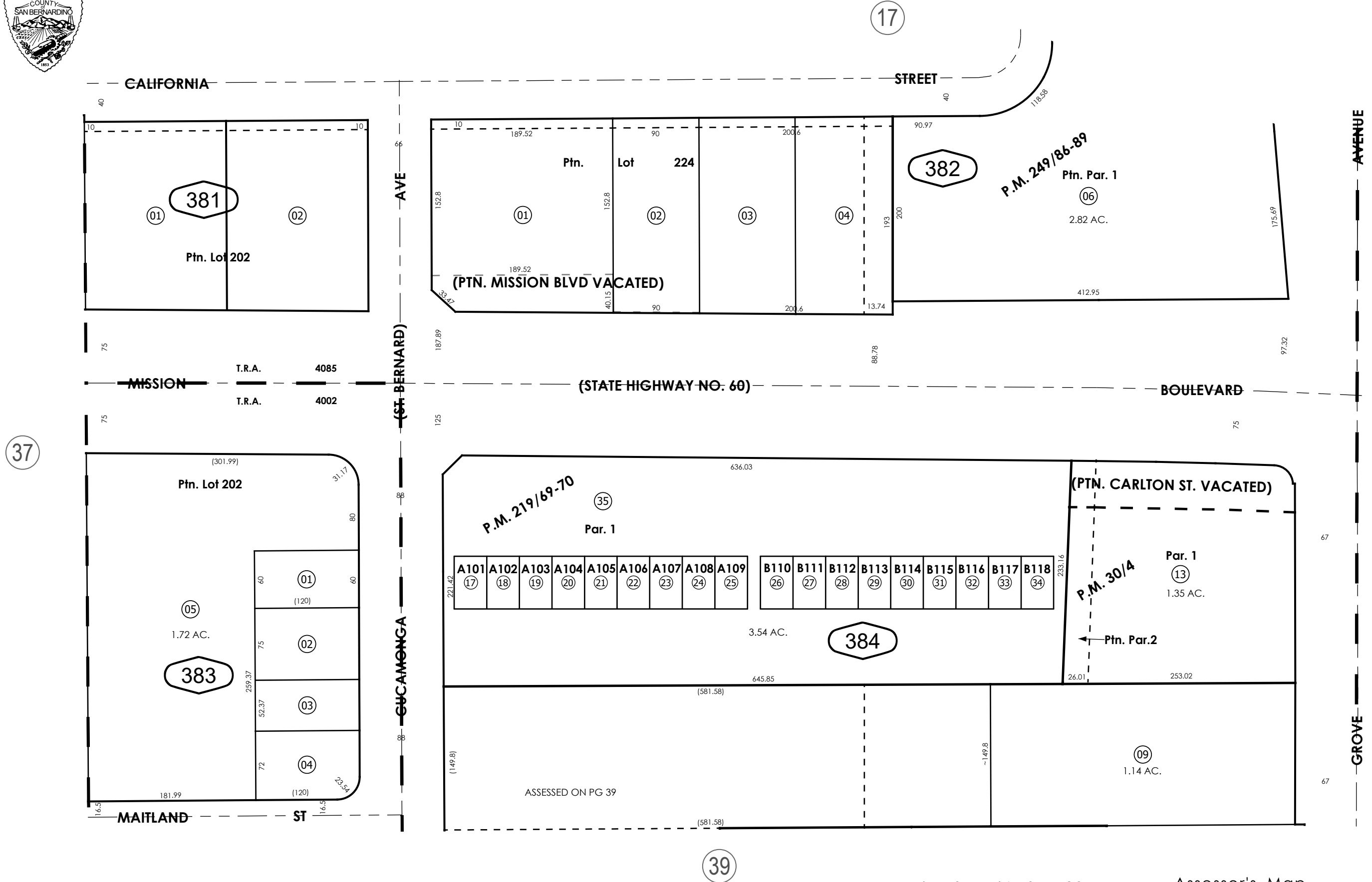
THIS MAP IS FOR THE PURPOSE
OF AD VALOREM TAXATION ONLY.



Ptn. Villa Plots South Side Tract
M.B. 6/11

City of Ontario
Tax Rate Area
4002 4085

1049 - 38



REVISED
05/07/26 XM

Assessor's Map
Book 1049 Page 38
San Bernardino County

Ptn. S.E.1/4, Sec.29
T.1S.,R.7W.

Ptn. Parcel Map No. 2882, P.M. 30/4
Parcel Map No. 17575, P.M. 219/69-70, Condo Plan 2007-0275880
Ptn. Parcel Map No. 19721, P.M. 249/86-89

November 2004