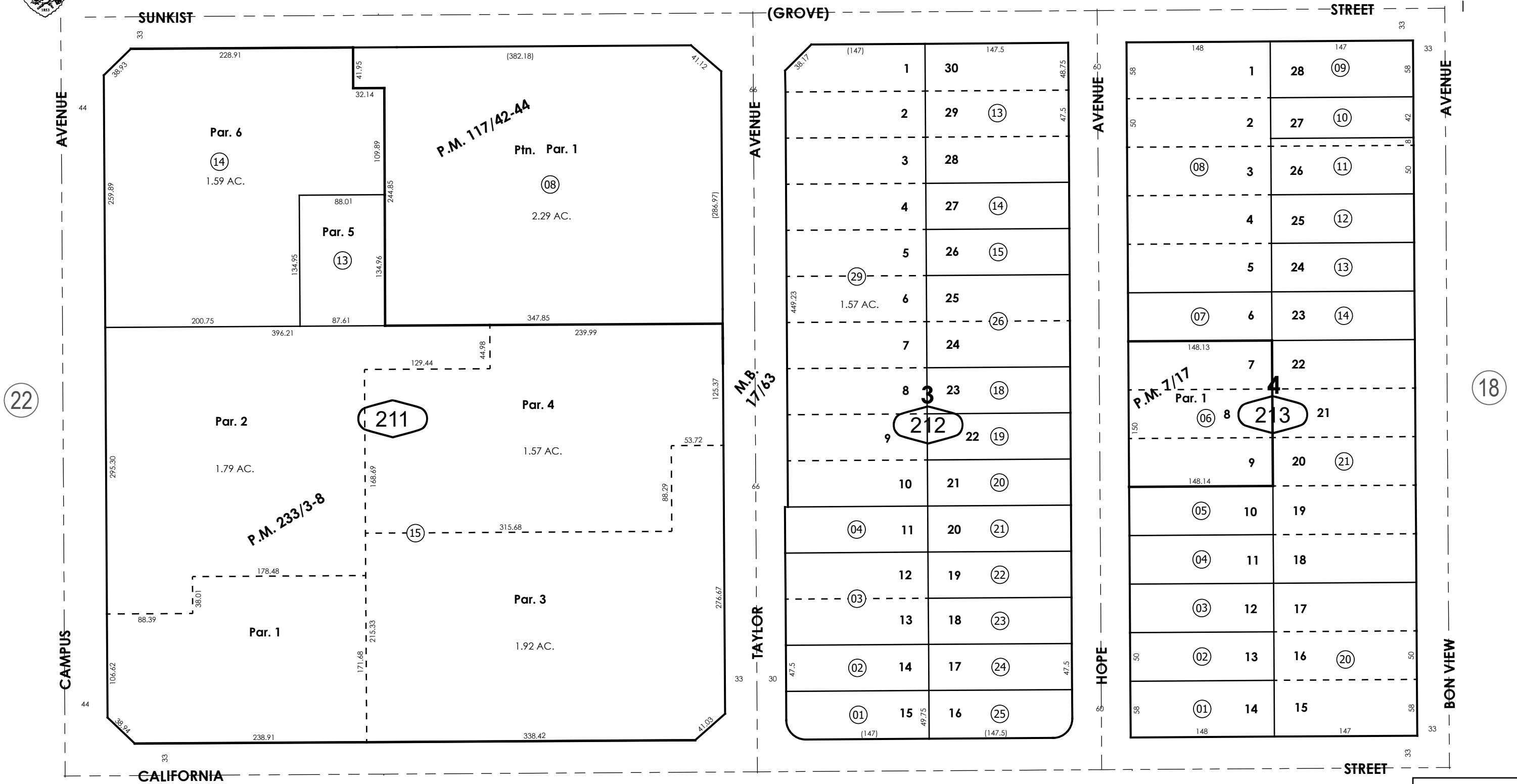


THIS MAP IS FOR THE PURPOSE
OF AD VALOREM TAXATION ONLY.

Bryant Tract, M.B. 17/63

City of Ontario
Tax Rate Area
4083

1049 - 21


$$= 100'$$


REVISED
04/28/26 XM

Assessor's Map
Book 1049 Page 21
San Bernardino County

Ptn. N.1/2, Sec.29
T.1S., R.7W.

Parcel Map No. 690, P.M. 7/17
Ptn. Parcel Map No. 8579, P.M. 117/42-44
Ptn. Parcel Map No. 17855, P.M.232/19-23, Amending Map, P.M. 233/3-8

November 2004