

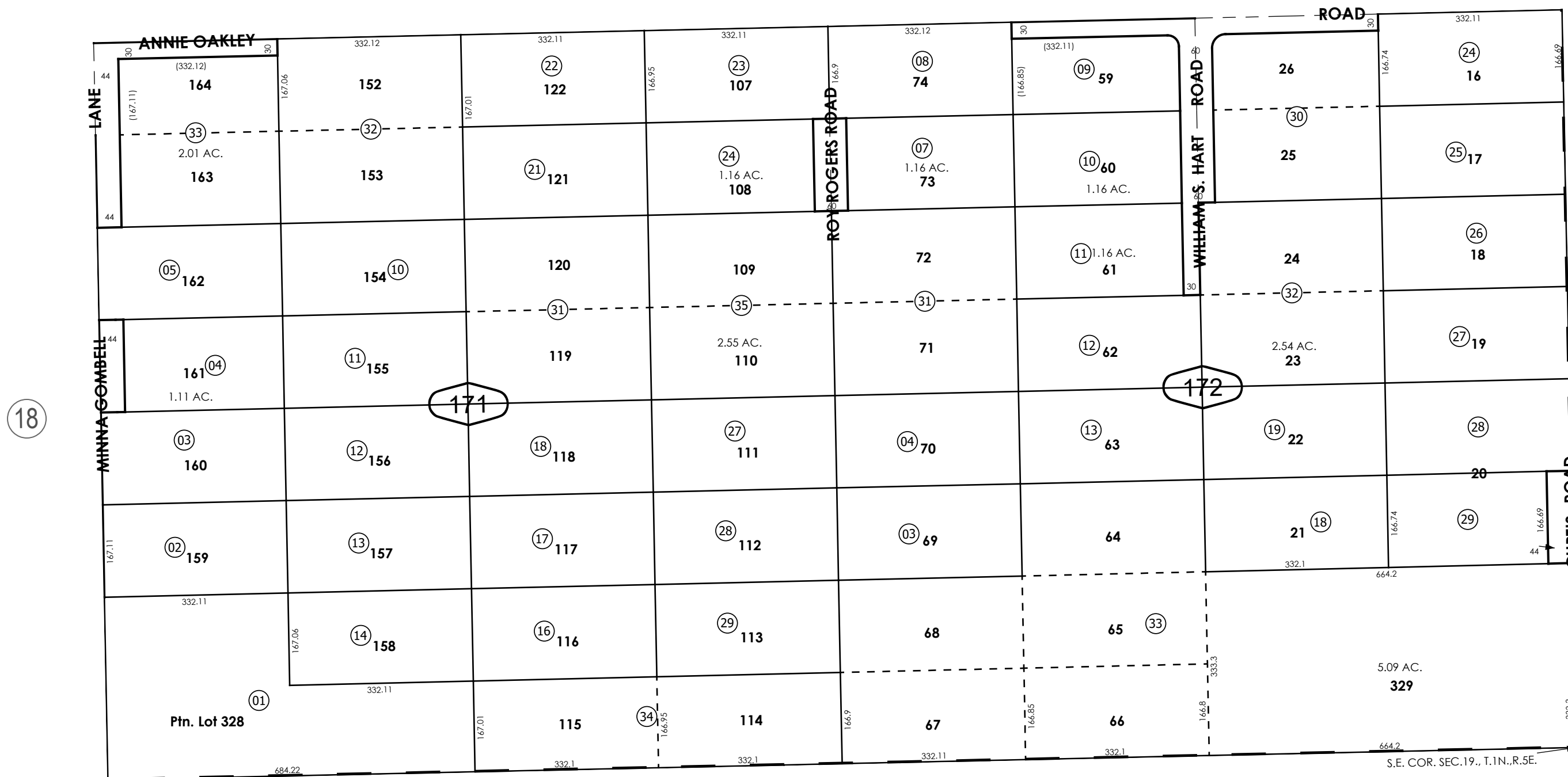
THIS MAP IS FOR THE PURPOSE
OF AD VALOREM TAXATION ONLY.



S.1/2, S.E.1/4 Fractional Sec.19, T.1N.,R.5E., S.B.B.&M.
Ptn. Assessor's Map No. 13, O.M. 1/22-23

Morongo Unified
Tax Rate Area
94035

0594 - 17



REVISED
05/29/24 CA
06/03/24 CA
12/18/24 CA
05/01/26 DC