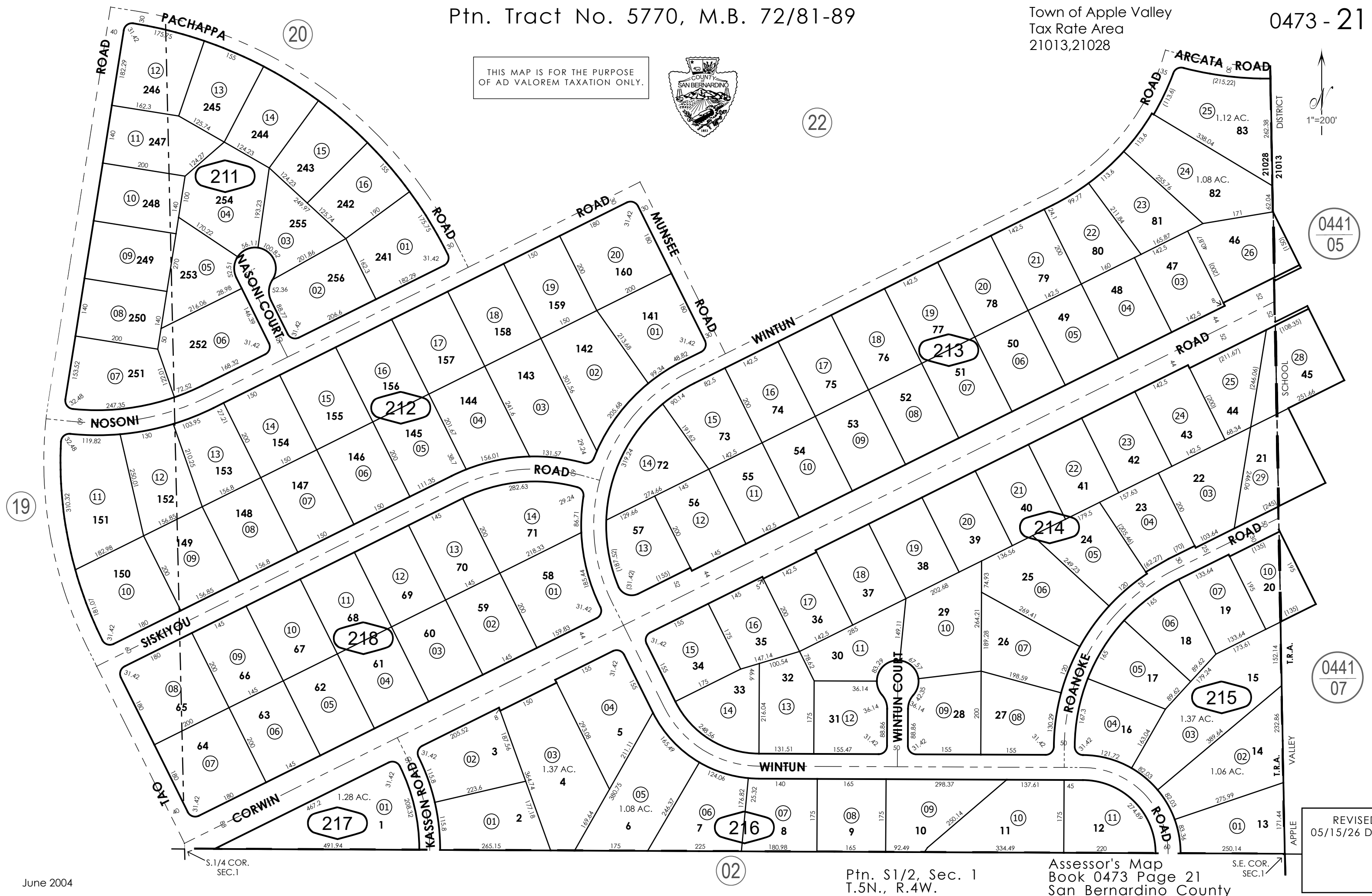


The seal of the County of San Bernardino is a shield-shaped emblem. At the top, a banner reads "COUNTY OF SAN BERNARDINO". Below the banner, the shield is divided into three sections: the left section shows a sailing ship, the center section shows a mountain range with a sunburst, and the right section shows a plow. At the bottom of the shield, the year "1853" is inscribed.

'=200'



S.E. COR.
SEC. 1

REVISÉ
05/15/26 DC