

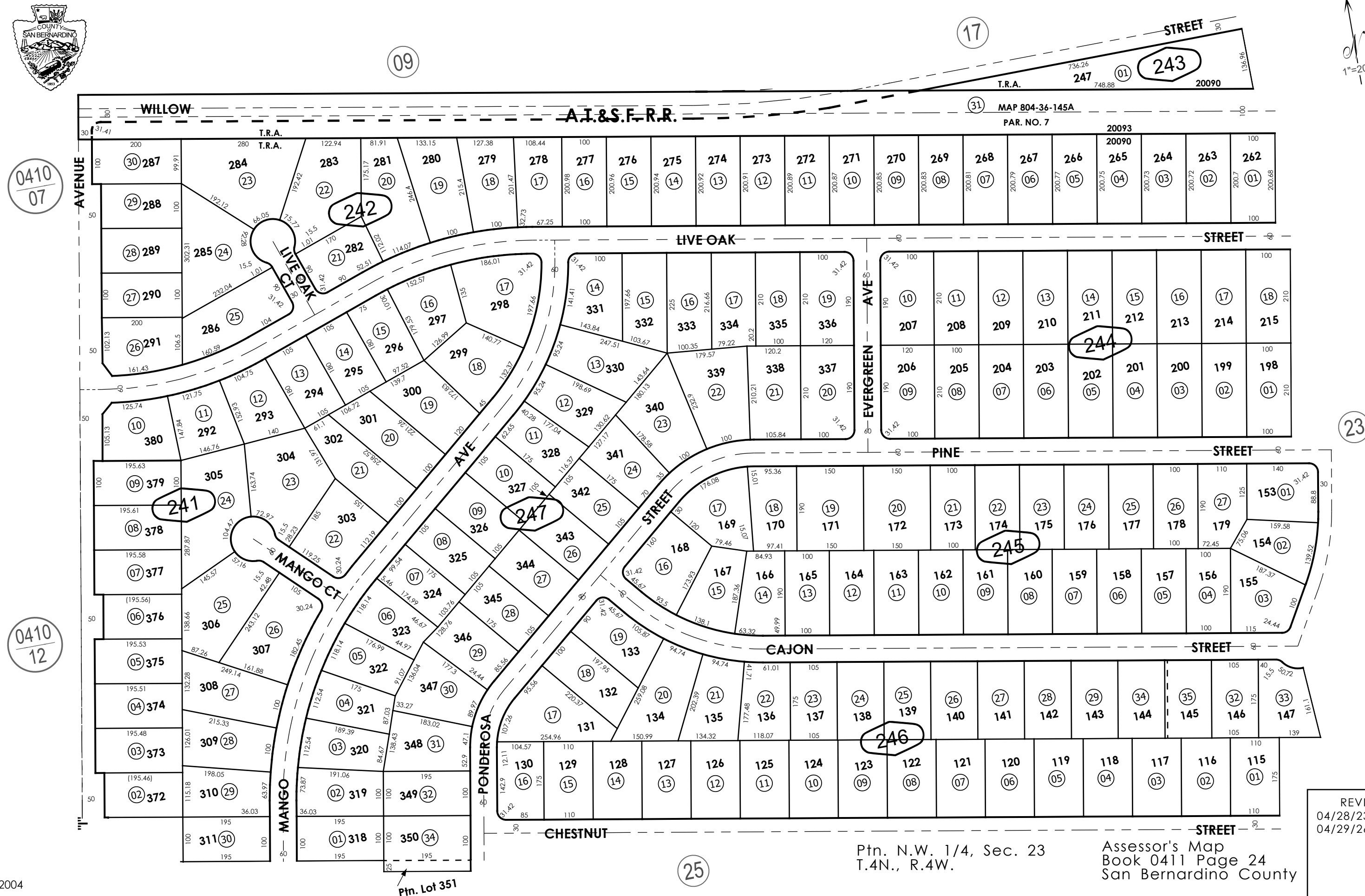
THIS MAP IS FOR THE PURPOSE
OF AD VALOREM TAXATION ONLY.



Ptn. Tract No. 5206, M.B. 62/51-52

City of Hesperia
Tax Rate Area
20090,20093

0411 - 24



REVISED
04/28/23 XM
04/29/26 XM

March 2004

Ptn. N.W. 1/4, Sec. 23
T.4N., R.4W.

Assessor's Map
Book 0411 Page 24
San Bernardino County