

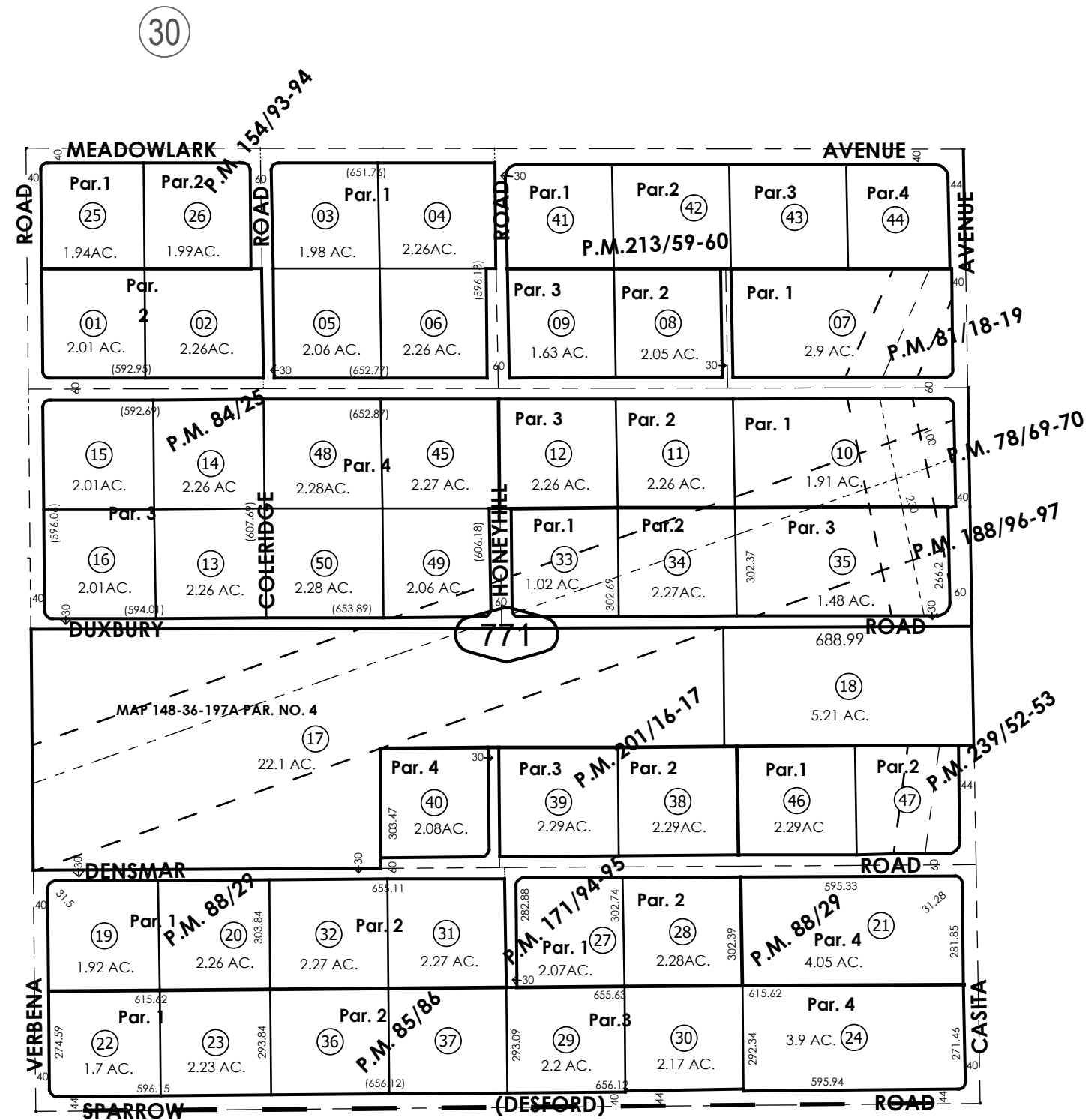
THIS MAP IS FOR THE PURPOSE
OF AD VALOREM TAXATION ONLY.



S.E.1/4, Sec.8, T.3N.,R.5W., S.B.B.&M.

Hesperia Unified
Tax Rate Area
79072

0357 - 77



Parcel Map No. 17861, P.M. 239/52-53
Parcel Map No. 7147, P.M. 78/69-70
Parcel Map No. 7789, P.M. 81/18-19
Ptn. Parcel Map No. 8165, P.M. 84/25
Parcel Map No. 8282, P.M. 85/86
Ptn. Parcel Map No. 8281, P.M. 88/29

Parcel Map No. 13035, P.M. 154/93-94
Parcel Map No. 14382, P.M. 171/94-95
Parcel Map No. 15286, P.M. 188/96-97
Ptn. Parcel Map No. 16016, P.M. 201/16-17
Parcel Map No. 16681, P.M. 213/59-60

S.E.1/4, Sec.8, T.3N.,R.5W.

Assessor's Map
Book 0357 Page 77
San Bernardino County

REVISED
05/15/26 DC

October 2024 RU