

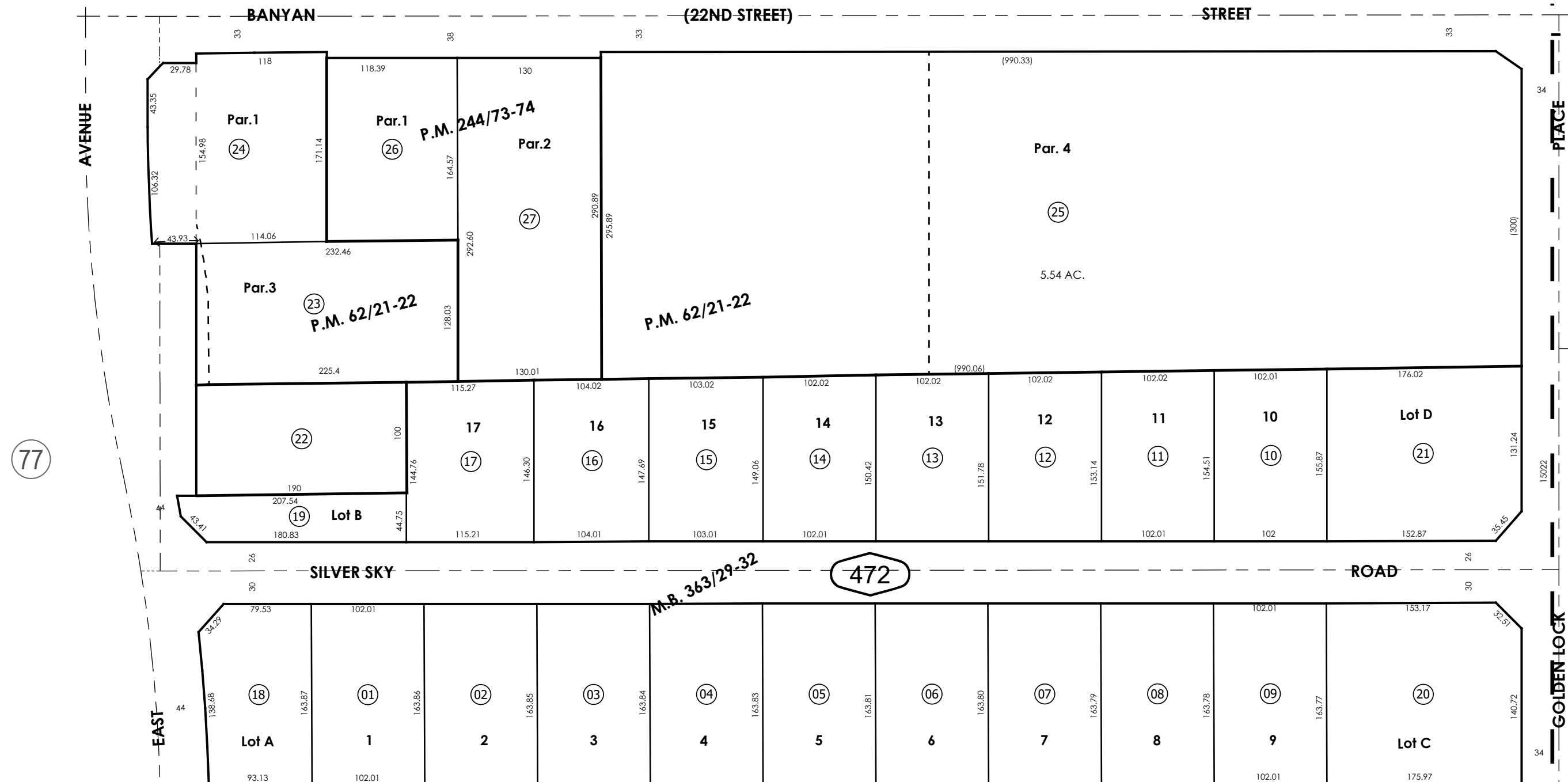
THIS MAP IS FOR THE PURPOSE
OF AD VALOREM TAXATION ONLY.



Tract No. 20334, M.B. 363/29-32

City of Rancho
Cucamonga
Tax Rate Area
15022

0225 - 47



02

REVISED
08/08/25 RU
05/06/26 CA

Assessor's Map
Book 0225 Page 47
San Bernardino County

Ptn. S.E.1/4, Sec. 28
T.1N., R.6W.

Parcel Map No. 5441, P.M. 62/21-22
Parcel Map No. 19528, P.M. 244/73-74

October 2022 KC