

THIS MAP IS FOR THE PURPOSE
OF AD VALOREM TAXATION ONLY.



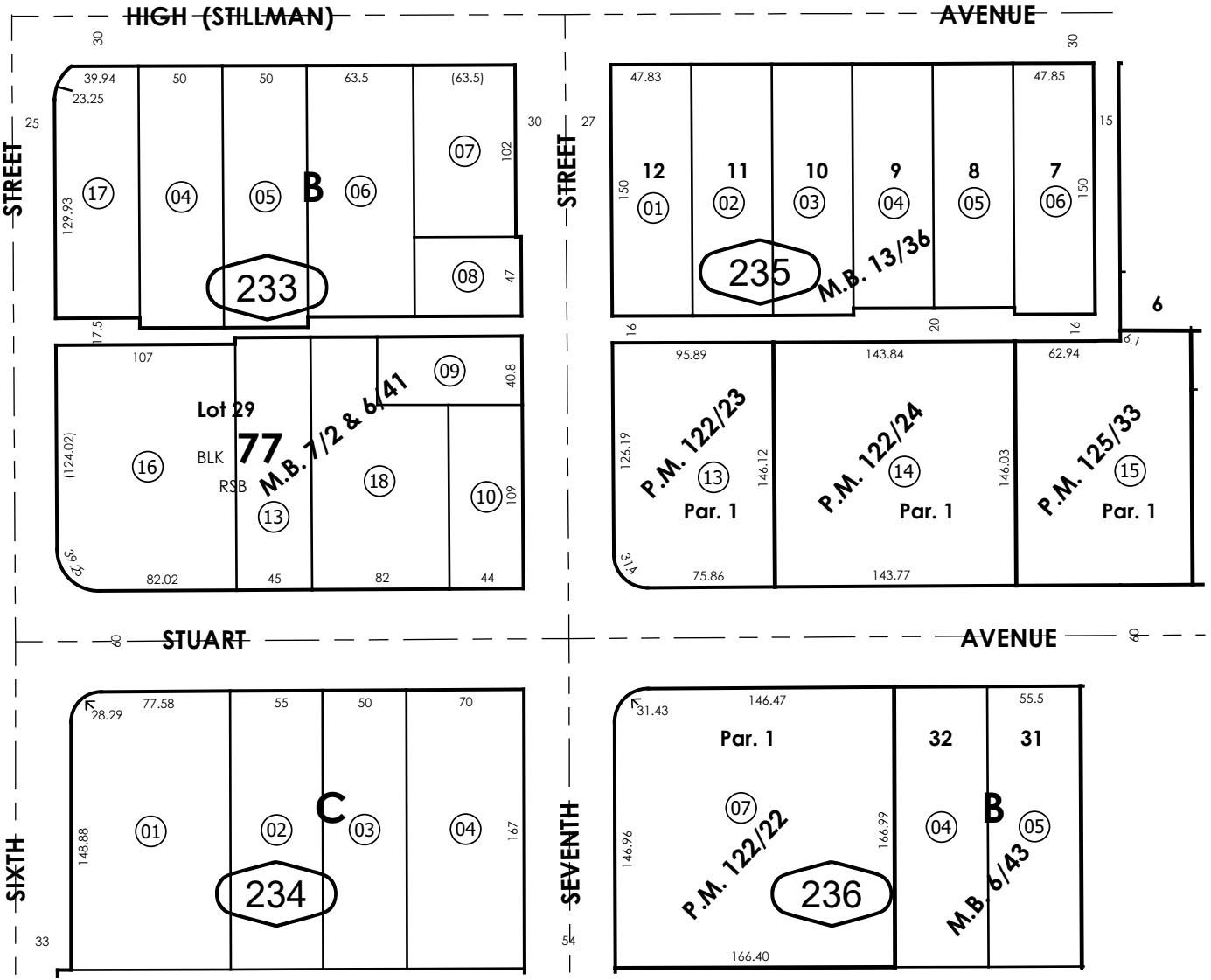
Ptn. Rancho San Bernardino, M.B. 7/2 & 6/41

City of Redlands
Tax Rate Area
5002

0169 - 23



21



24

31

OCT. 1949

Ptn. Balcom & Sibley's Add., M.B. 6/43
Ptn. Best Sub., M.B. 13/36
Parcel Map No. 10571, P.M. 122/22
Parcel Map No. 10572, P.M. 122/23
Parcel Map No. 10573, P.M. 122/24
Parcel Map No. 11420, P.M. 125/33

Ptn. S.E. 1/4, N.E. 1/4, Sec.
27, T.1S., R.3W.

Assessor's Map
Book 0169 Page 23
San Bernardino County

REVISED
05/05/26 DC