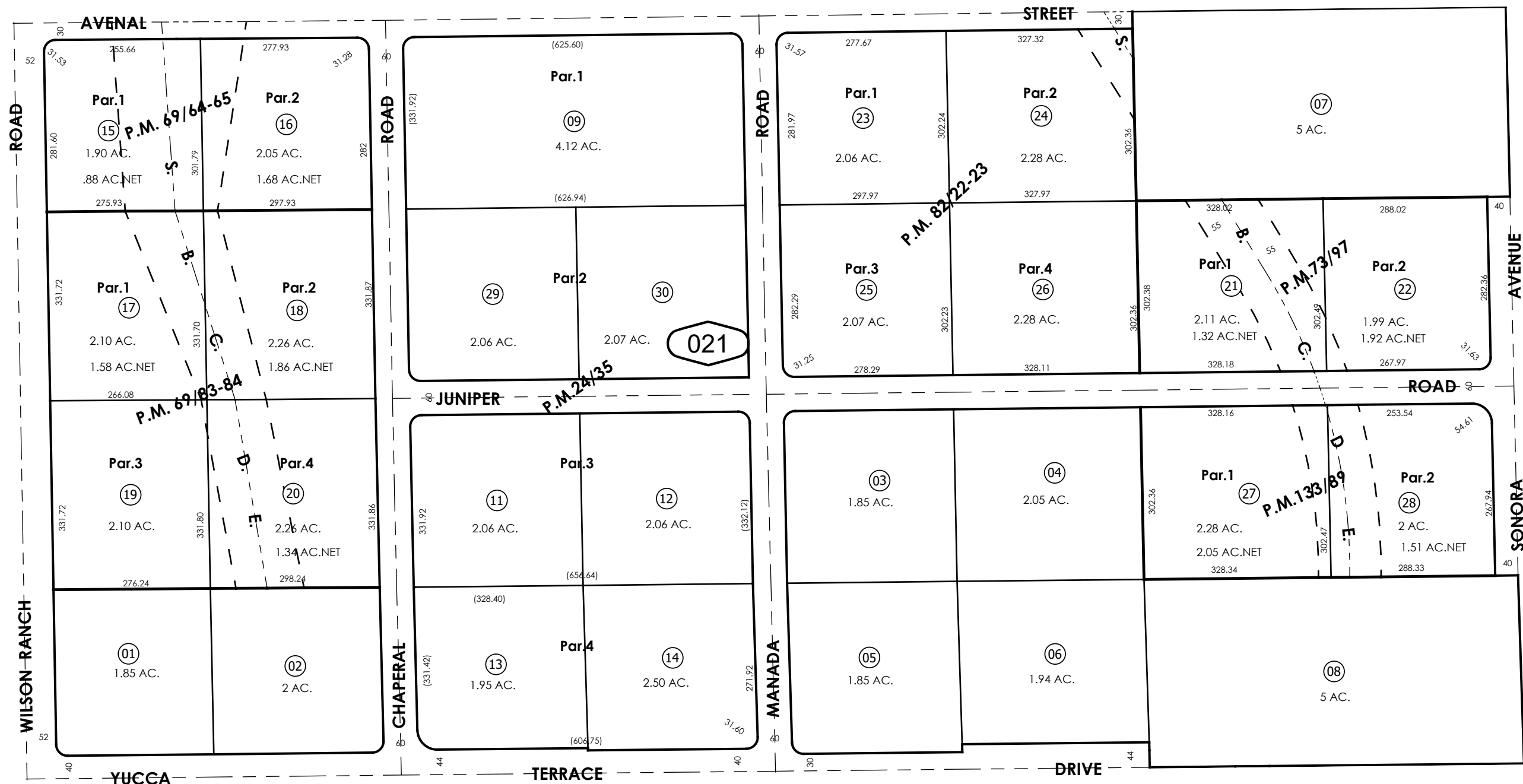




3066
50



06

03

04

Parcel Map No. 2691, P.M.24/35
Parcel Map No. 6769, P.M.69/64-65
Parcel Map No. 6671, P.M.69/83-84
Parcel Map No. 7334, P.M.73/97
Parcel Map No. 7862, P.M.82/22-23
Parcel Map No. 11609, P.M.133/89

May 1994

S.1/2, N.W.1/4, Sec. 16,
T.4N., R.6W.

Assessor's Map
Book 3065 Page 02
San Bernardino County

REVISED
04/28/26 DC