

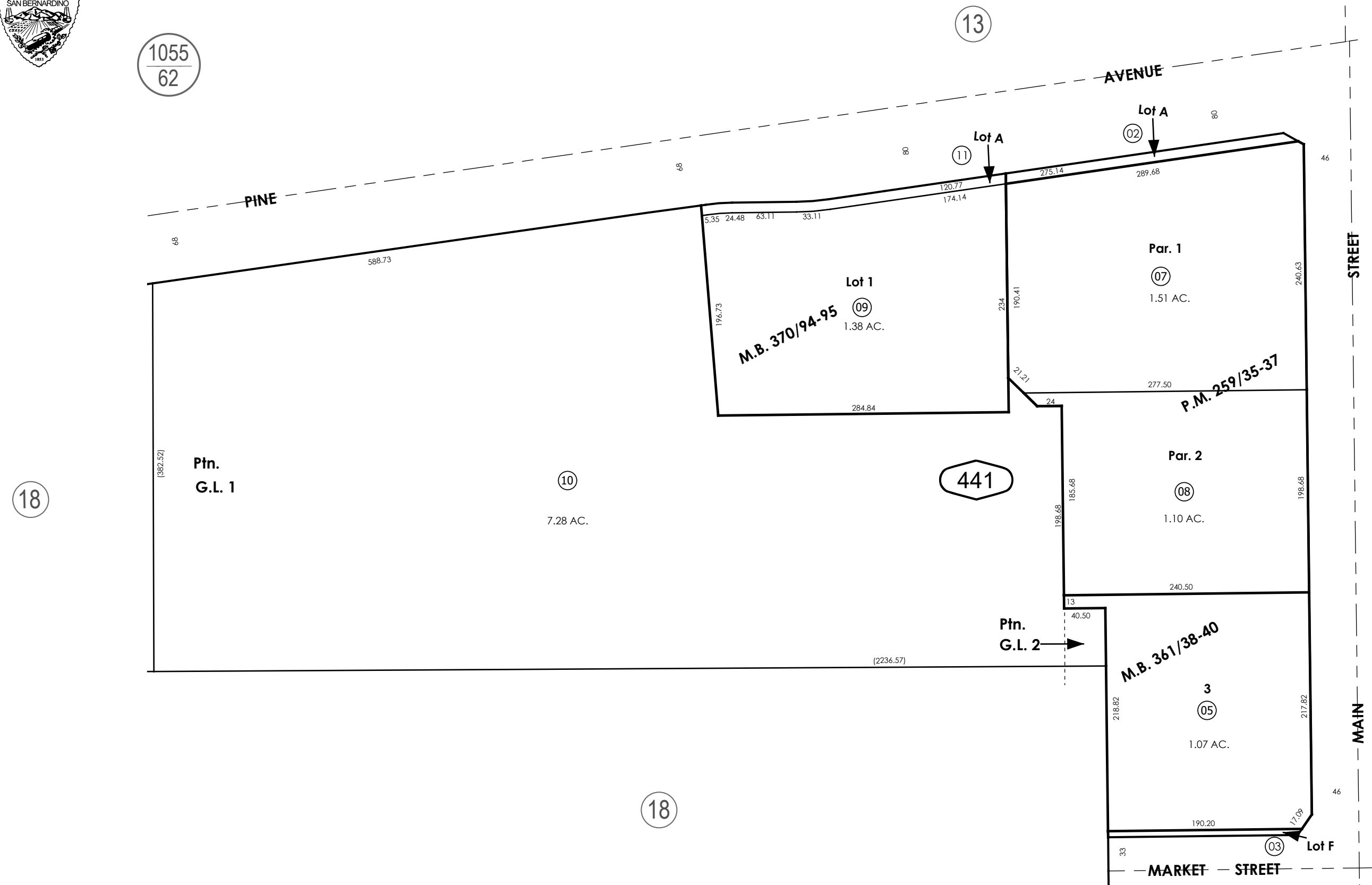
THIS MAP IS FOR THE PURPOSE  
OF AD VALOREM TAXATION ONLY.



Ptn. Tract No. 20326, M.B. 361/38-40

City of Chino  
Tax Rate Area  
1164

1057 - 44



REVISED  
11/07/24 KA  
06/11/25 RU  
04/09/26 XM

Ptn. N.W.1/4, Sec. 33  
T.2S., R.7W.

Assessor's Map  
Book 1057 Page 44  
San Bernardino County

Tract Map No. 16420-7, M.B. 370/94-95  
Ptn. Parcel Map No. 20313, P.M. 259/35-37

January 2022 KC