

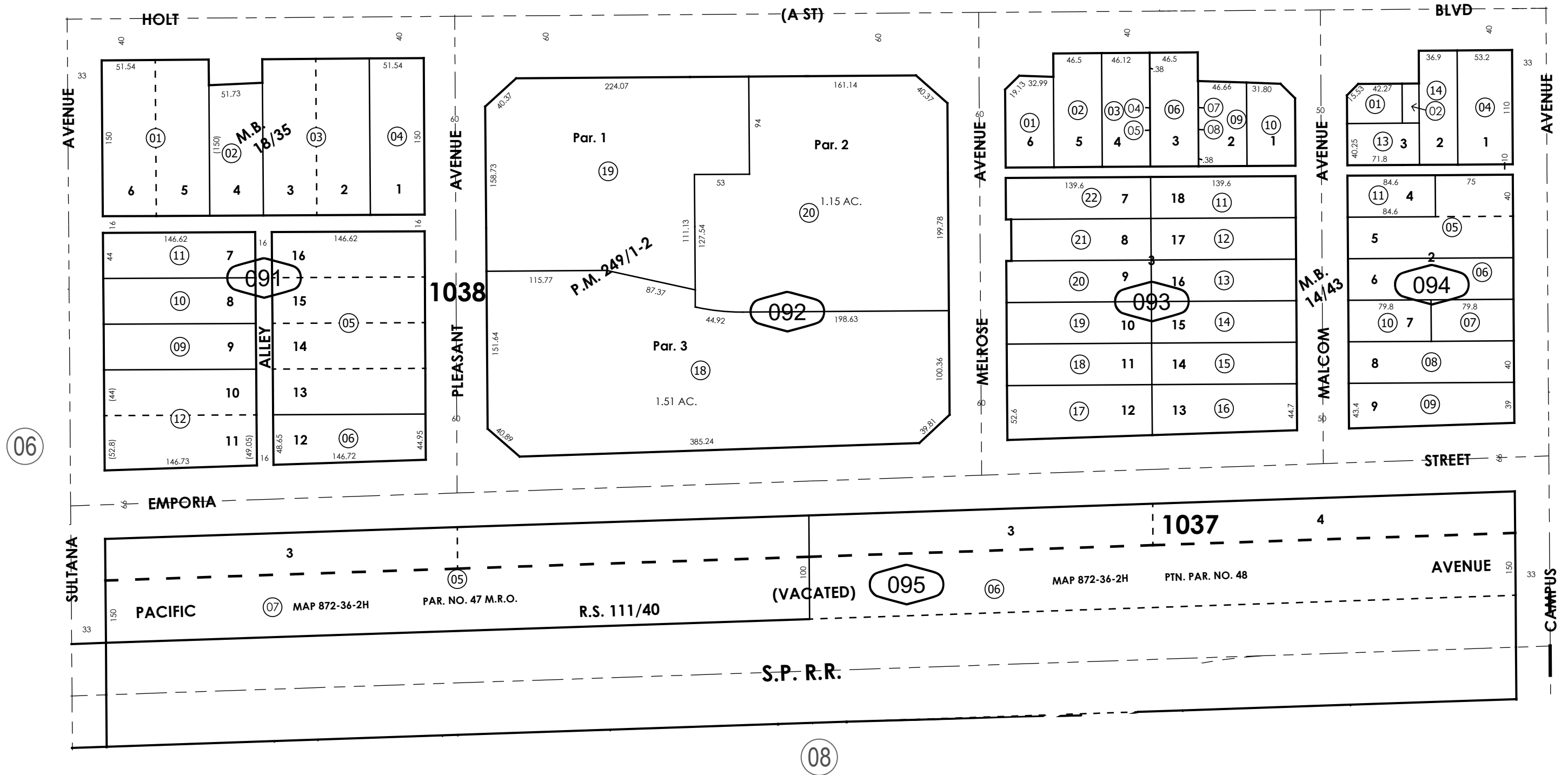
THIS MAP IS FOR THE PURPOSE
OF AD VALOREM TAXATION ONLY.



Ptn. Town of Ontario
M.B. 9/43

City of Ontario
Tax Rate Area
4051

1049 - 09


$$\frac{1048}{52}$$


Record of Survey, R.S. 111/40
Ptn. EastSide Tract, M.B. 14/43
Hart & Hardy Subdivision, M.B. 18/35
Parcel Map No. 19706, P.M. 249/1-2

Ptn. N.W.1/4, Sec.29
T.1S.,R.7W.

Assessor's Map
Book 1049 Page 09
San Bernardino County

REVISED
03/07/24 KA
09/18/24 CA
07/07/25 KA
12/08/25 KC
04/20/26 XM