

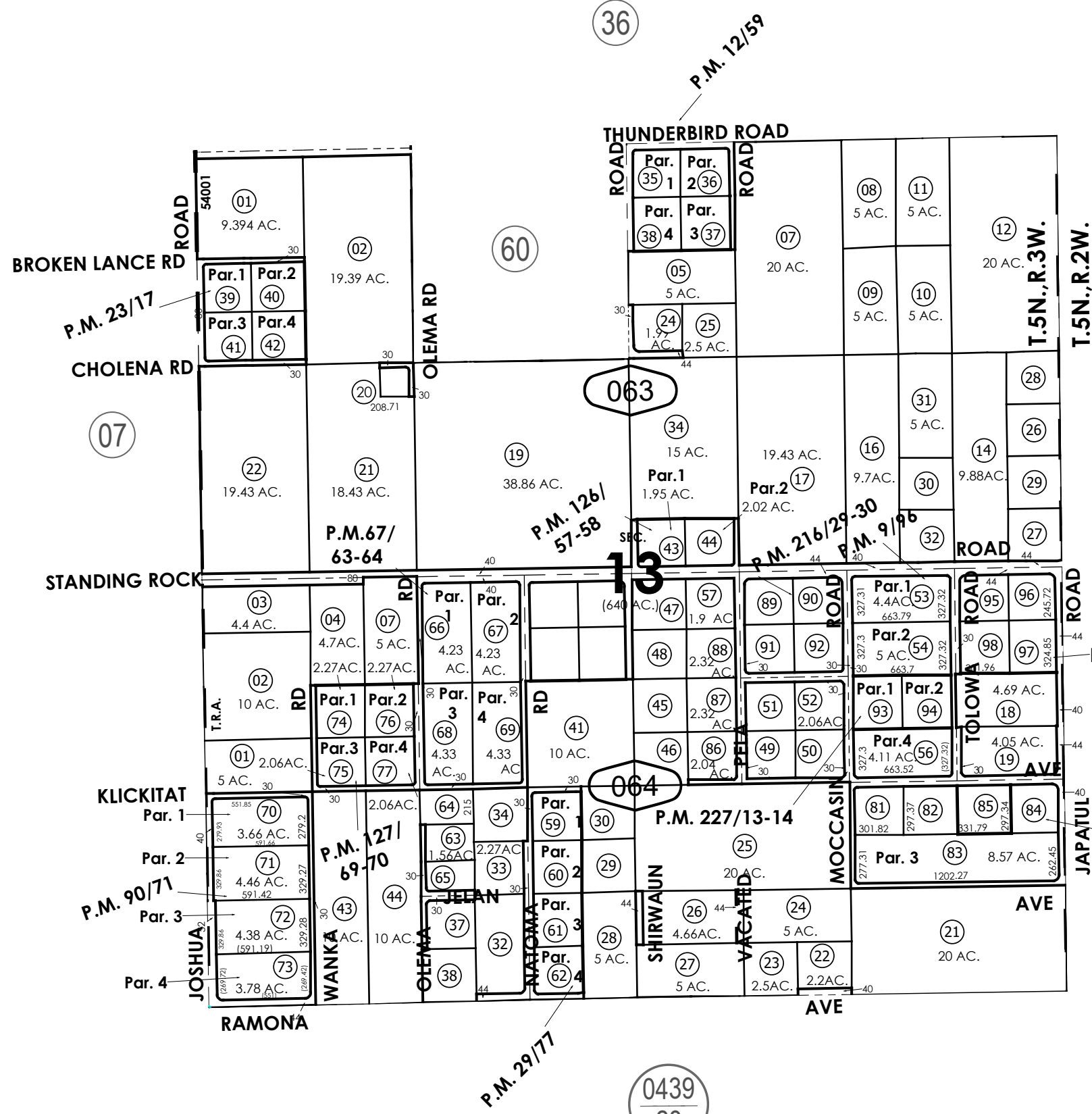
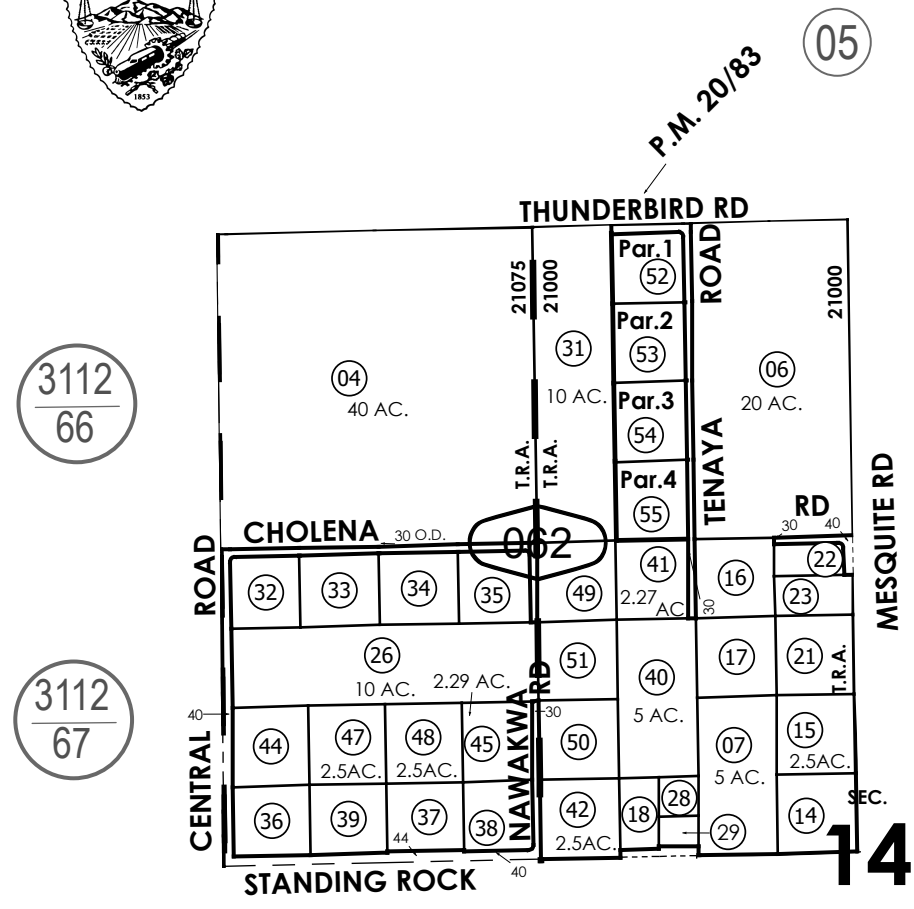
THIS MAP IS FOR THE PURPOSE
OF AD VALOREM TAXATION ONLY.



Sec.13 & N.W.1/4 Sec.14, T.5N.,R.3W., S.B.B.&M.

Town of Apple Valley
Apple Valley
Tax Rate Area
21000 21075 54001

0437 - 06



- 89 Par. 1 1.96 AC.
- 90 Par. 2 1.96 AC.
- 91 Par. 3 2.06 AC.
- 92 Par. 4 2.06 AC.
- 93 Par. 1 2.27 AC.
- 94 Par. 2 2.27 AC.

0436
18

- 95 Par. 1 1.94 AC.
- 96 Par. 2 1.85 AC.
- 97 Par. 3 2.15 AC.
- 98 Par. 4 2.25 AC.

P.M. 161/9-10

- 65 → 1.28 AC.
- 81 → Par. 1 2.06 AC.
- 82 → Par. 2 2.26 AC.
- 84 → Par. 4 1.99 AC.
- 85 → 2.26 AC.
- 49 → 2.05 AC.
- 50 → 2.05 AC.

Parcel Map No. 974, P.M. 9/96
Parcel Map No. 1487, P.M. 12/59
Parcel Map No. 2348, P.M. 20/83
Parcel Map No. 2506, P.M. 23/17
Parcel Map No. 3153, P.M. 29/77
Parcel Map No. 6447, P.M. 67/63-64
Parcel Map No. 8795, P.M. 90/71

May 2004

Parcel Map No. 11321, P.M. 126/57-58
Parcel Map No. 10761, P.M. 127/69-70
Parcel Map No. 11938, P.M. 161/9-10
Parcel Map No. 16962, P.M. 216/29-30
Parcel Map No. 18099, P.M. 227/13-14
Parcel Map No. 17033, P.M. 238/82-83

Sec.13 & N.W.1/4 Sec.14,
T.5N.,R.3W.

Assessor's Map
Book 0437 Page 06
San Bernardino County

REVISED
01/19/24 KA
03/26/24 CA
04/21/26 XM