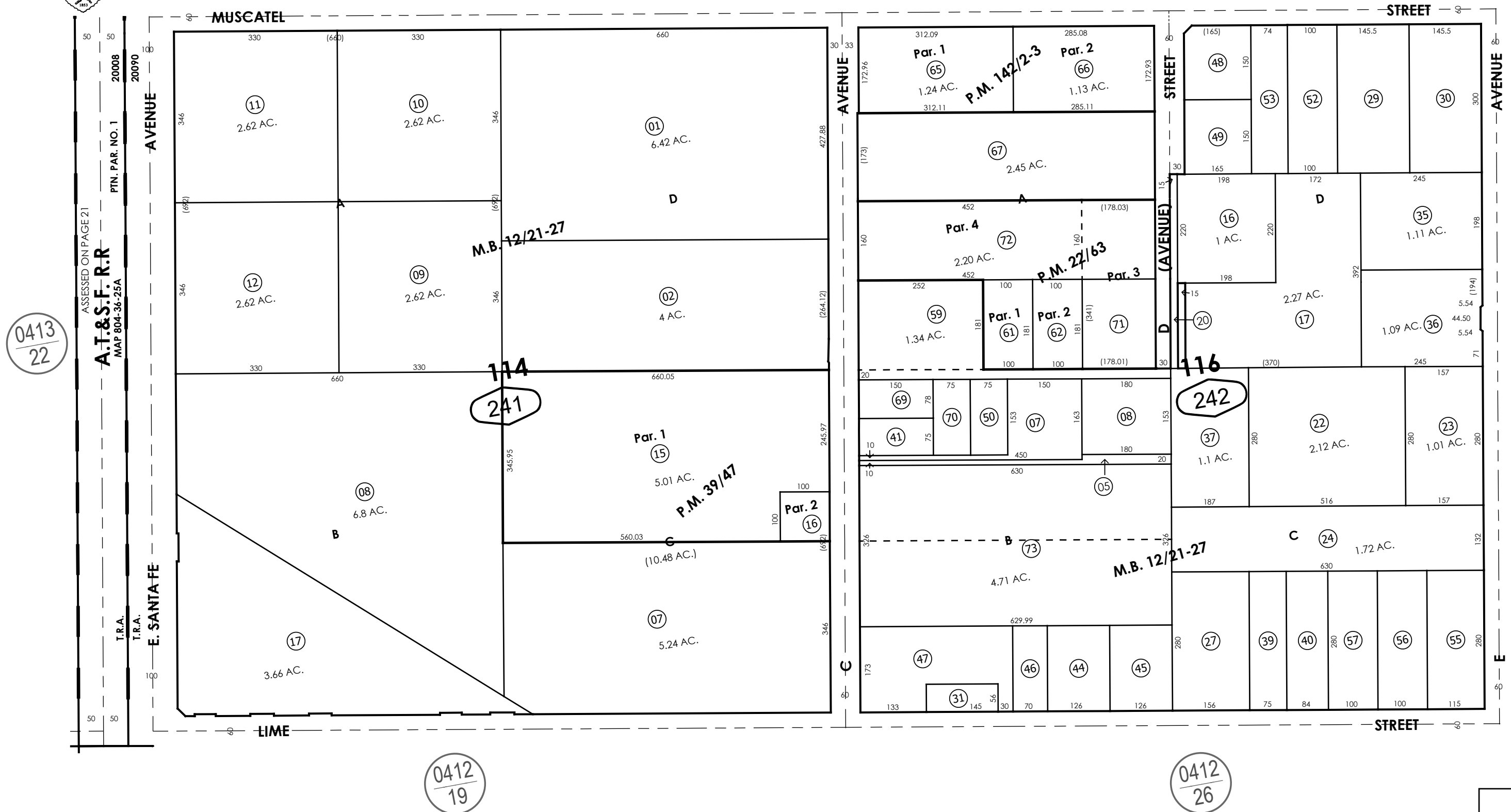


THIS MAP IS FOR THE PURPOSE
OF AD VALOREM TAXATION ONLY.

Ptn. Map No. 1 of Hesperia
M.B. 12/21-27

City of Hesperia
Tax Rate Area
20008,20090

0410 - 24



April 2004

Parcel Map No. 2540, P.M. 22/63
Parcel Map No. 4300, P.M. 39/47
Parcel Map No. 12417, P.M. 142/2-3

Ptn. N.E.1/4, Sec. 28
T.4N., R.4W.

Assessor's Map
Book 0410 Page 24
San Bernardino County

REVISED
04/10/26 KC