

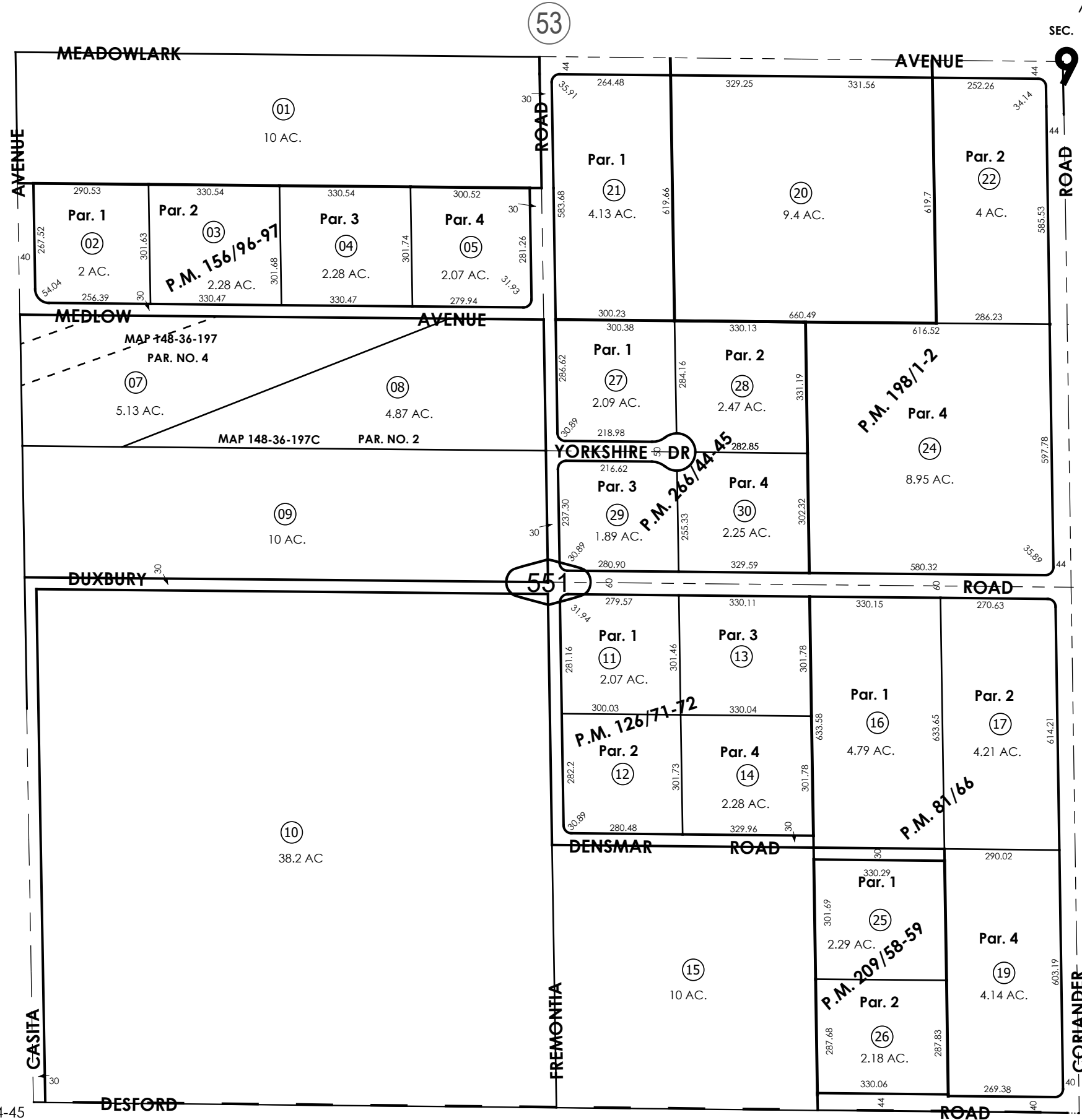
THIS MAP IS FOR THE PURPOSE  
OF AD VALOREM TAXATION ONLY.



S.W.1/4 Sec.9, T.3N.,R.5W., S.B.B.&M.

Hesperia Unified  
Tax Rate Area  
79072

0357 - 55



Parcel Map No. 20299, P.M. 266/44-45  
Parcel Map No. 16529, P.M. 209/58-59  
Parcel Map No. 15801, P.M. 198/1-2  
Parcel Map No. 7932, P.M. 81/66  
Parcel Map No. 10632, P.M. 126/71-72  
Parcel Map No. 13333, P.M. 156/96-97

April 2004

S.W.1/4 Sec.9, T.3N.,R.5W.

Assessor's Map  
Book 0357 Page 55  
San Bernardino County

REVISED  
10/16/24 RU  
04/03/26 XM