

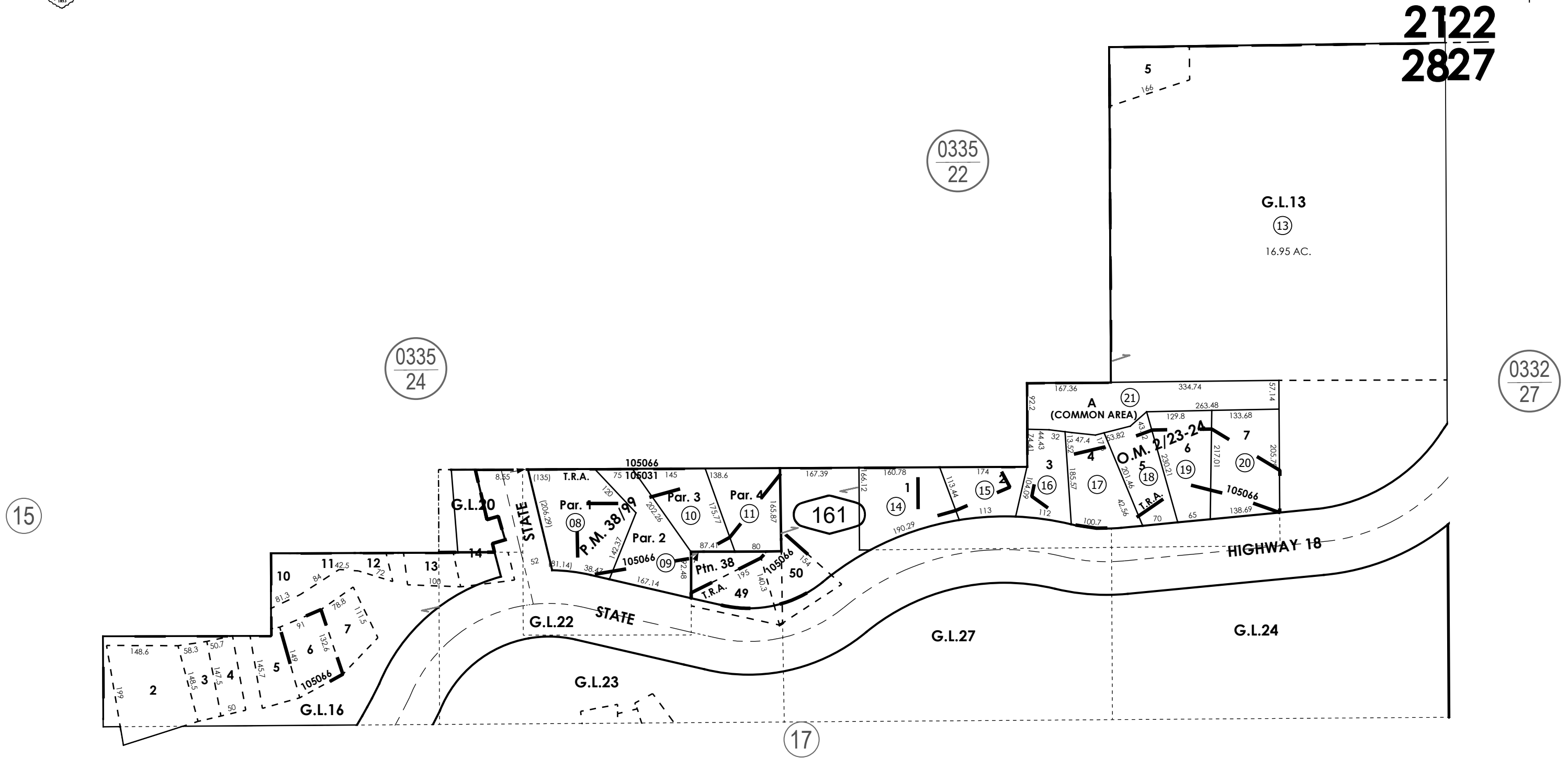
THIS MAP IS FOR THE PURPOSE
OF AD VALOREM TAXATION ONLY.



Ptn. N.E.1/4 Sec.28, T.2N.,R.3W., S.B.B.&M.

Rim of The World Unified
Tax Rate Area
105031 105066

0336 - 16



April 2005

Official Map No. 1005, M.B. 2/23-24
Ptn. Arrowhead Tract, Gov't. Leases
Ptn. Crest Road Tract, Gov't. Leases
Parcel Map No. 4161, P.M. 38/99

Assessor's Map
Book 0336 Page 16
San Bernardino County

REVISED
12/18/25 KC