

THIS MAP IS FOR THE PURPOSE
OF AD VALOREM TAXATION ONLY.



0194
32

0322
09

0322
55

$$\left(\frac{0322}{57} \right)$$

032
63

Parcel Map No. 2551, P.M. 23/94
Parcel Map No. 2552, P.M. 24/7
Parcel Map No. 2550, P.M. 25/35
Record of Survey, R.S. 29/27
Parcel Map No. 2549, P.M. 29/41
Parcel Map No. 10199, P.M. 137/53-54

January 2005

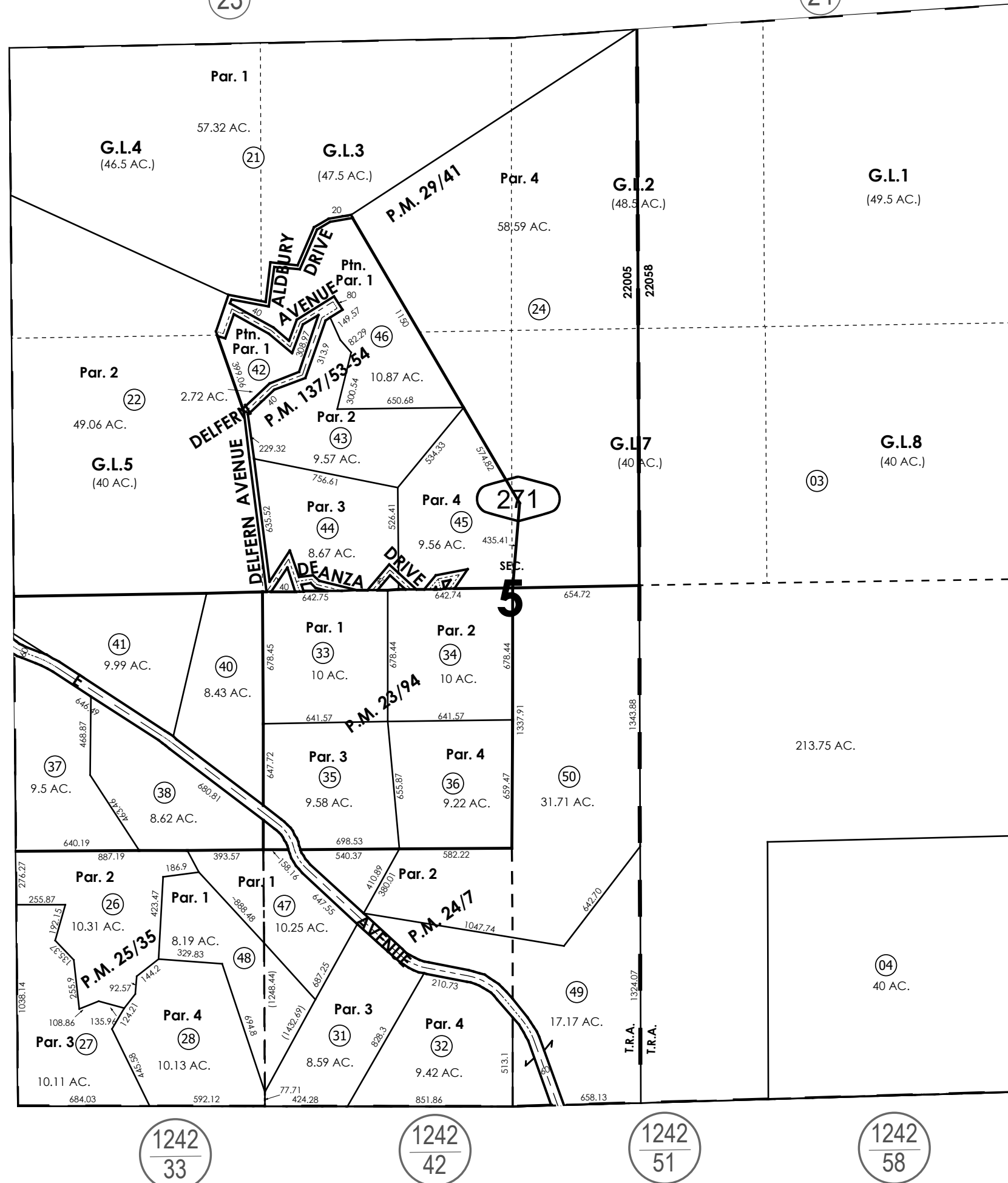
23

Sec.5, T.2S.,R.1W., S.B.B.&M.

24

City of Yucaipa
Yucaipa Joint Unified
Tax Rate Area
22005,22058

0321 - 27



Assessor's Map
Book 0321 Page 27
San Bernardino County

REVISED
01/12/26 XM