

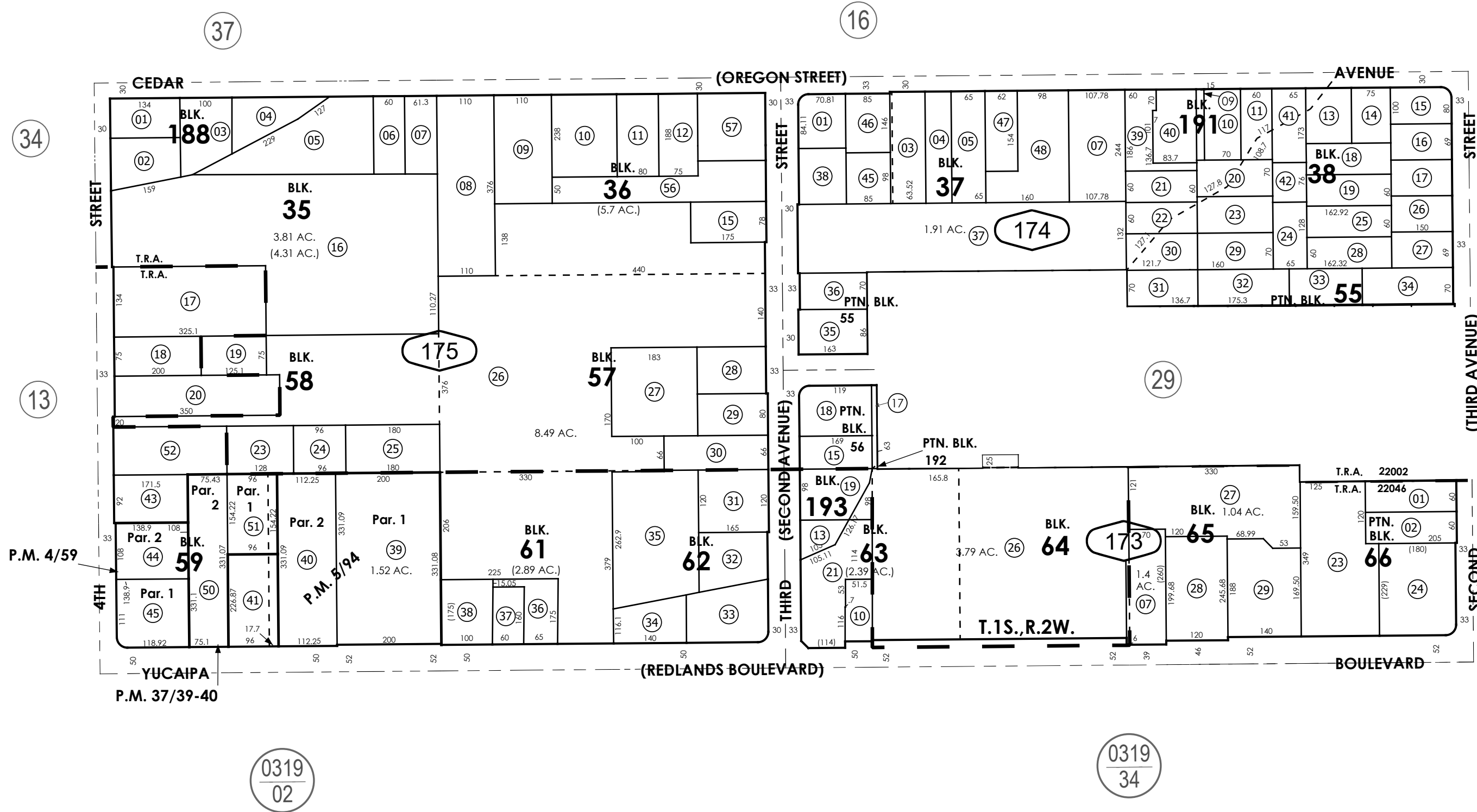
THIS MAP IS FOR THE PURPOSE
OF AD VALOREM TAXATION ONLY.



Ptn. Revised Map of Yucaipa City
M.B. 17/91-93

City of Yucaipa
Tax Rate Area
22002,22046

0303 - 17



January 2005

Parcel Map No. 396, P.M. 4/59
Parcel Map No. 638, P.M. 5/94
Parcel Map No. 4039, P.M. 37/39-40

Ptn. S.W.1/4, Sec. 36
T.1S., R.2W.

Assessor's Map
Book 0303 Page 17
San Bernardino County

REVISED
01/12/26 XM