

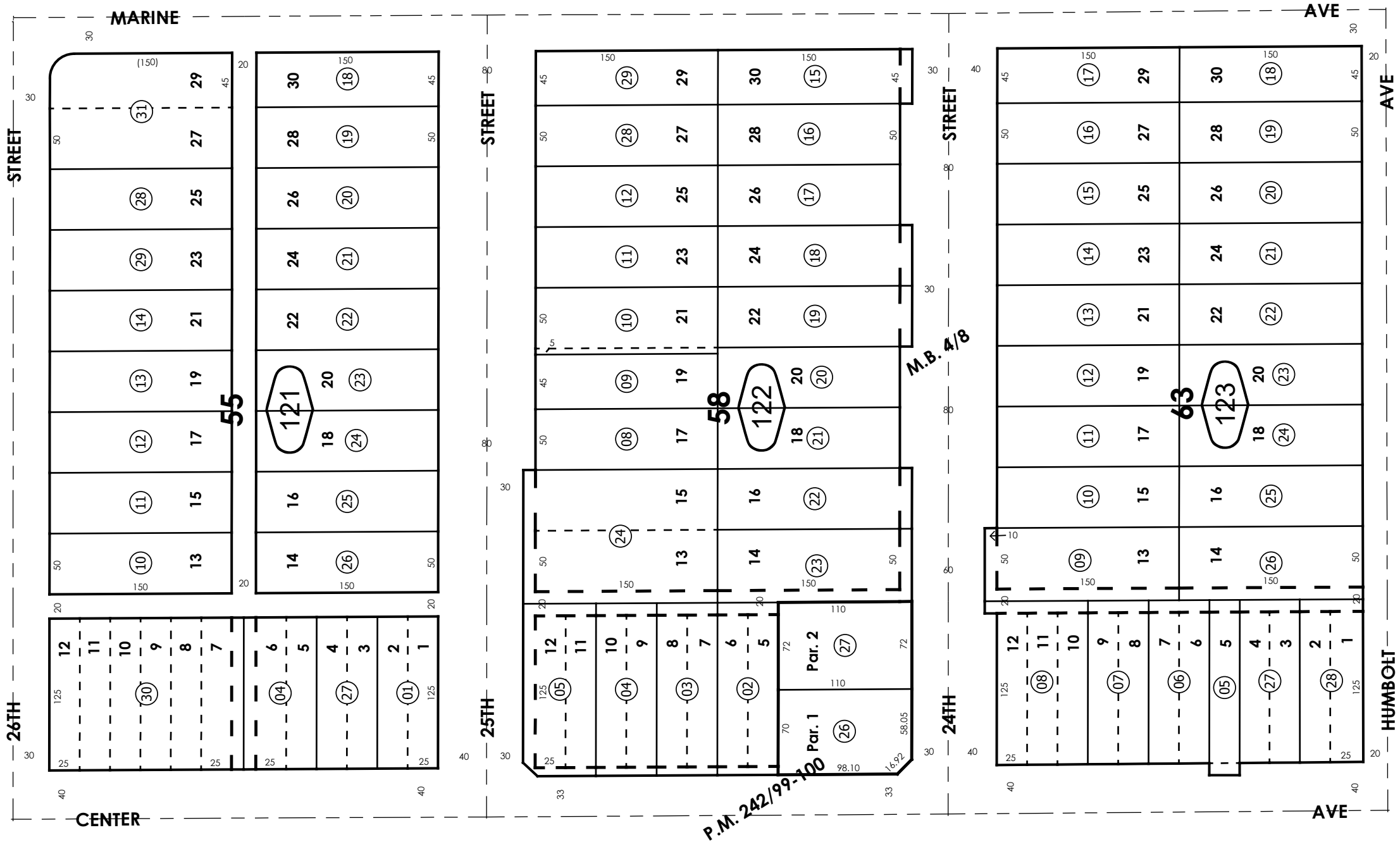
THIS MAP IS FOR THE PURPOSE
OF AD VALOREM TAXATION ONLY.



Ptn. North Cucamonga, M.B. 4/8

City of Rancho
Cucamonga
Tax Rate Area
15051

0209 - 12



September 2004 Parcel Map No. 19505, P.M. 242/99-100

Ptn. S.E.1/4, Sec. 11
T.1S., R.7W.

Assessor's Map
Book 0209 Page 12
San Bernardino County

REVISED
01/14/26 CA