

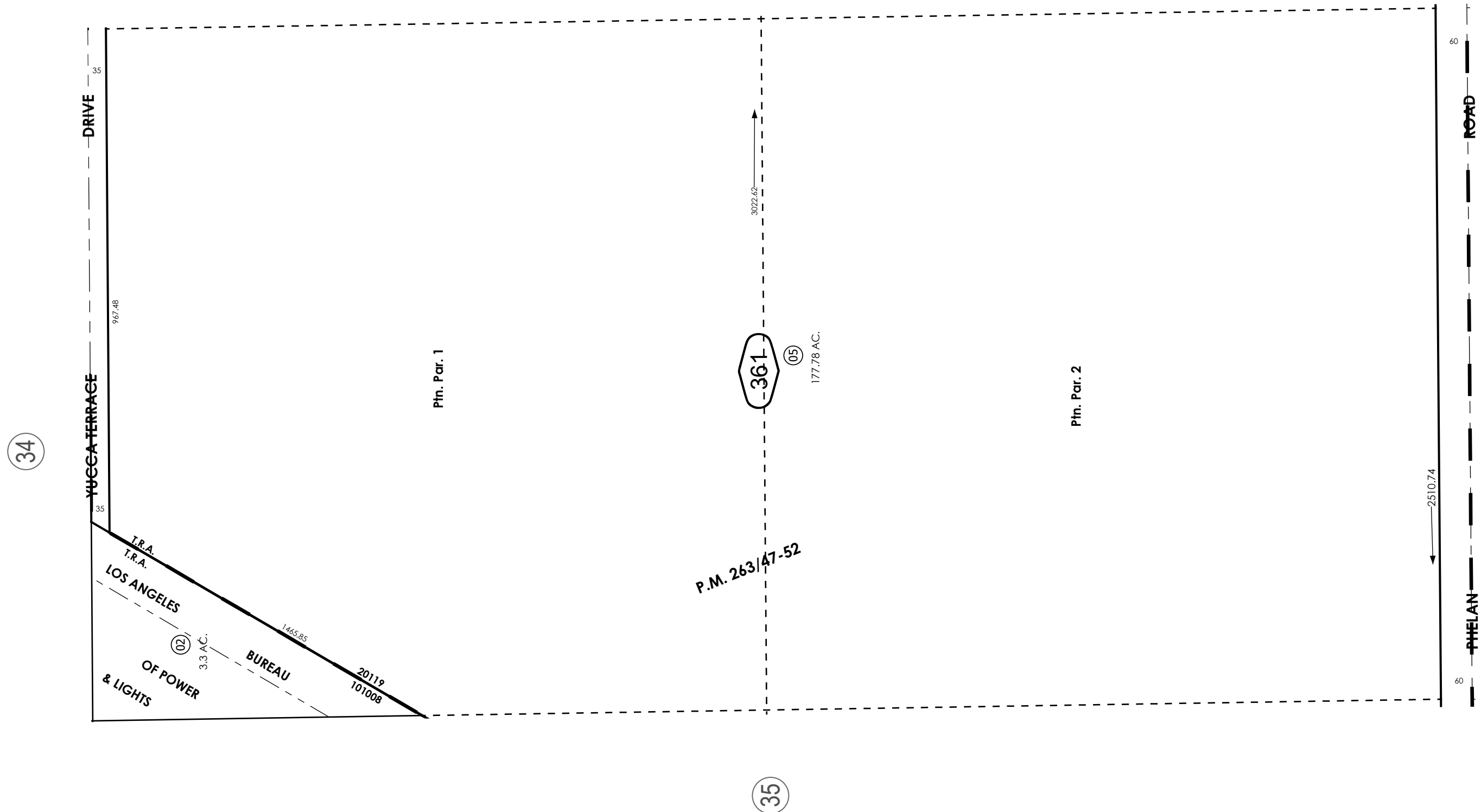
THIS MAP IS FOR THE PURPOSE  
OF AD VALOREM TAXATION ONLY.



E.1/2, S.W.1/4, Sec. 16, T.4N.,R.5W., S.B.M.

City of Hesperia  
Snowline Joint Unified  
Tax Rate Area  
101008, 20119

3064 - 36



REVISED  
10/30/24 KA  
12/19/25 XM

FEBRUARY 1995 Ptn. Parcel Map No. 20257, P.M. 263/47-52

Assessor's Map  
Book 3064 Page 36  
San Bernardino County