

THIS MAP IS FOR THE PURPOSE
OF AD VALOREM TAXATION ONLY.



Ptn. Tract No. 18989-1, M.B. 365/62-73

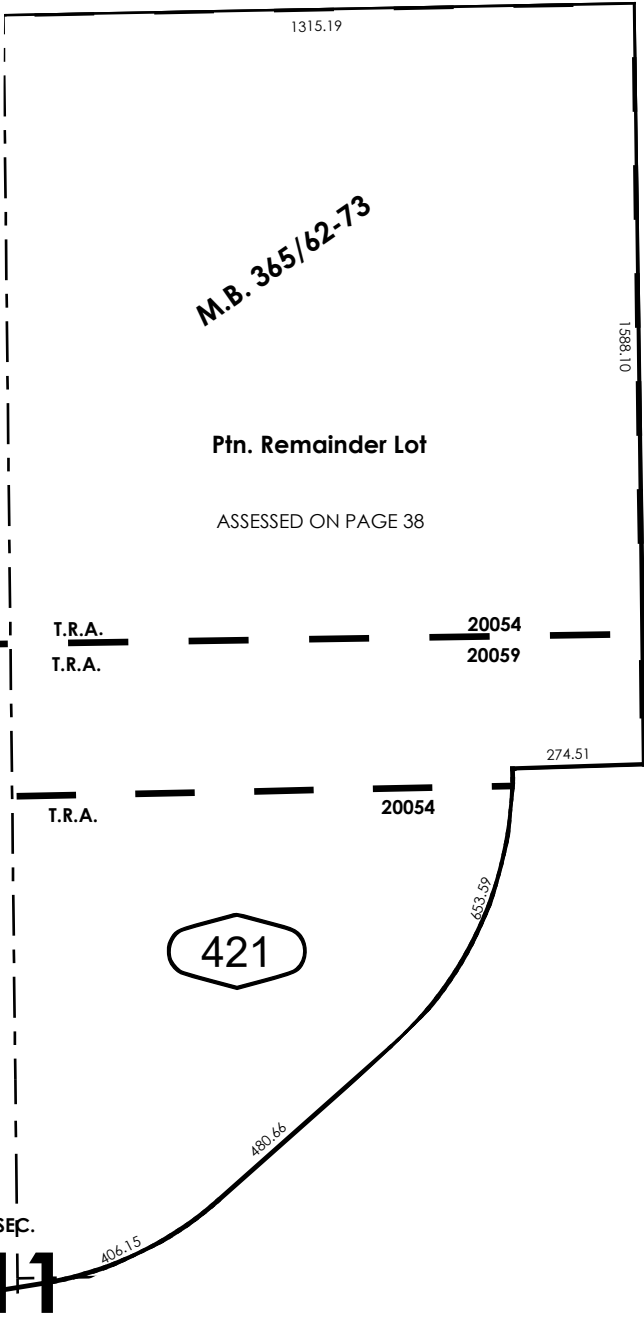
City of Hesperia
Tax Rate Area
20054 20059

3027 - 42



38

01



41

421

Ptn. N.E.1/4, Sec. 11
T.3N., R.4W.

Assessor's Map
Book 3027 Page 42
San Bernardino County

REVISED
12/15/25 KC