

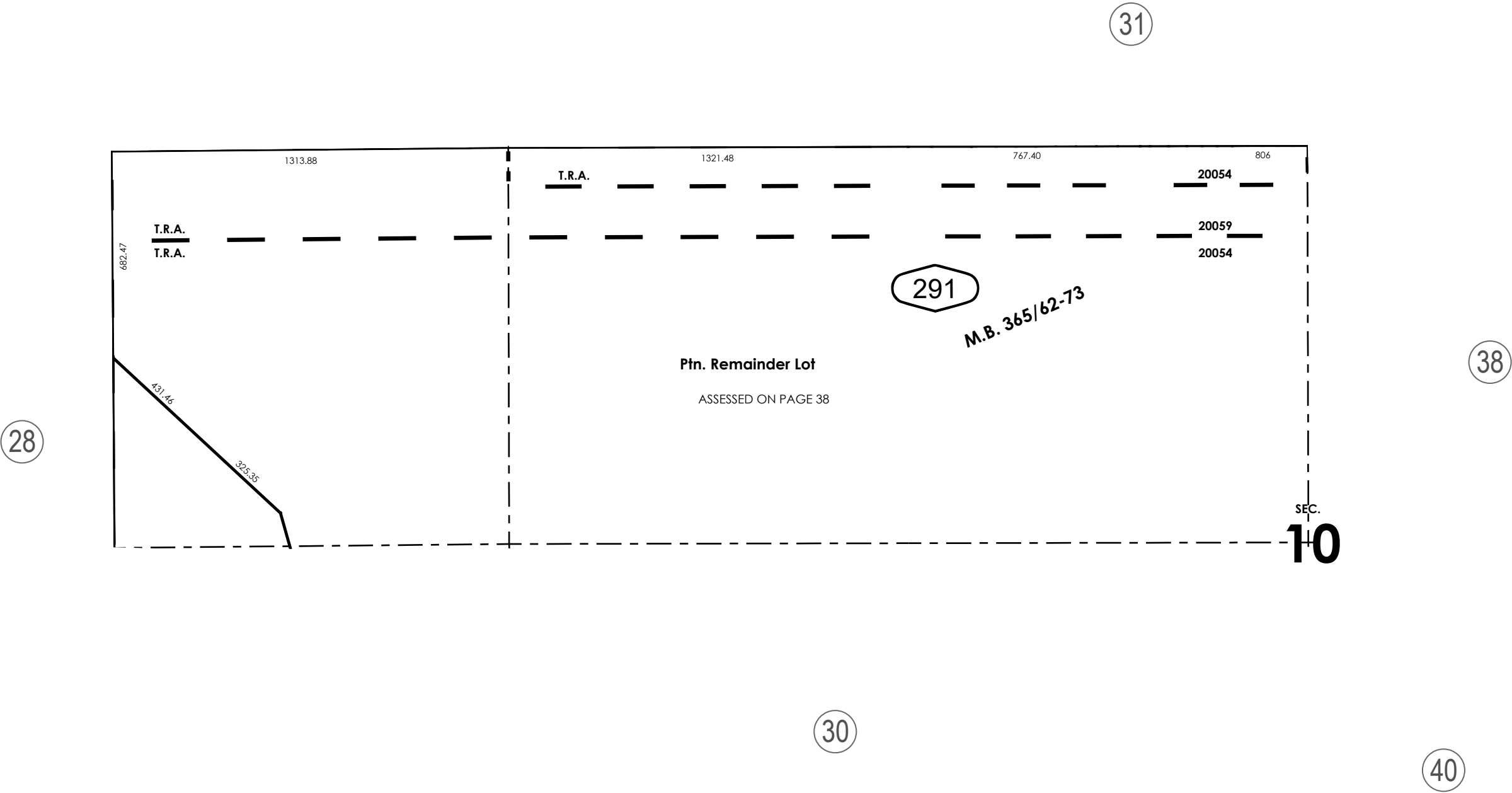
THIS MAP IS FOR THE PURPOSE
OF AD VALOREM TAXATION ONLY.



Ptn. Tract No. 18989-1, M.B. 365/62-73

City of Hesperia
Tax Rate Area
20010 20036 20054

3027 - 29



REVISED
12/15/25 KC

Ptn. N.1/2, Sec. 9 AND 10
T.3N., R.4W.

Assessor's Map
Book 3027 Page 29
San Bernardino County