

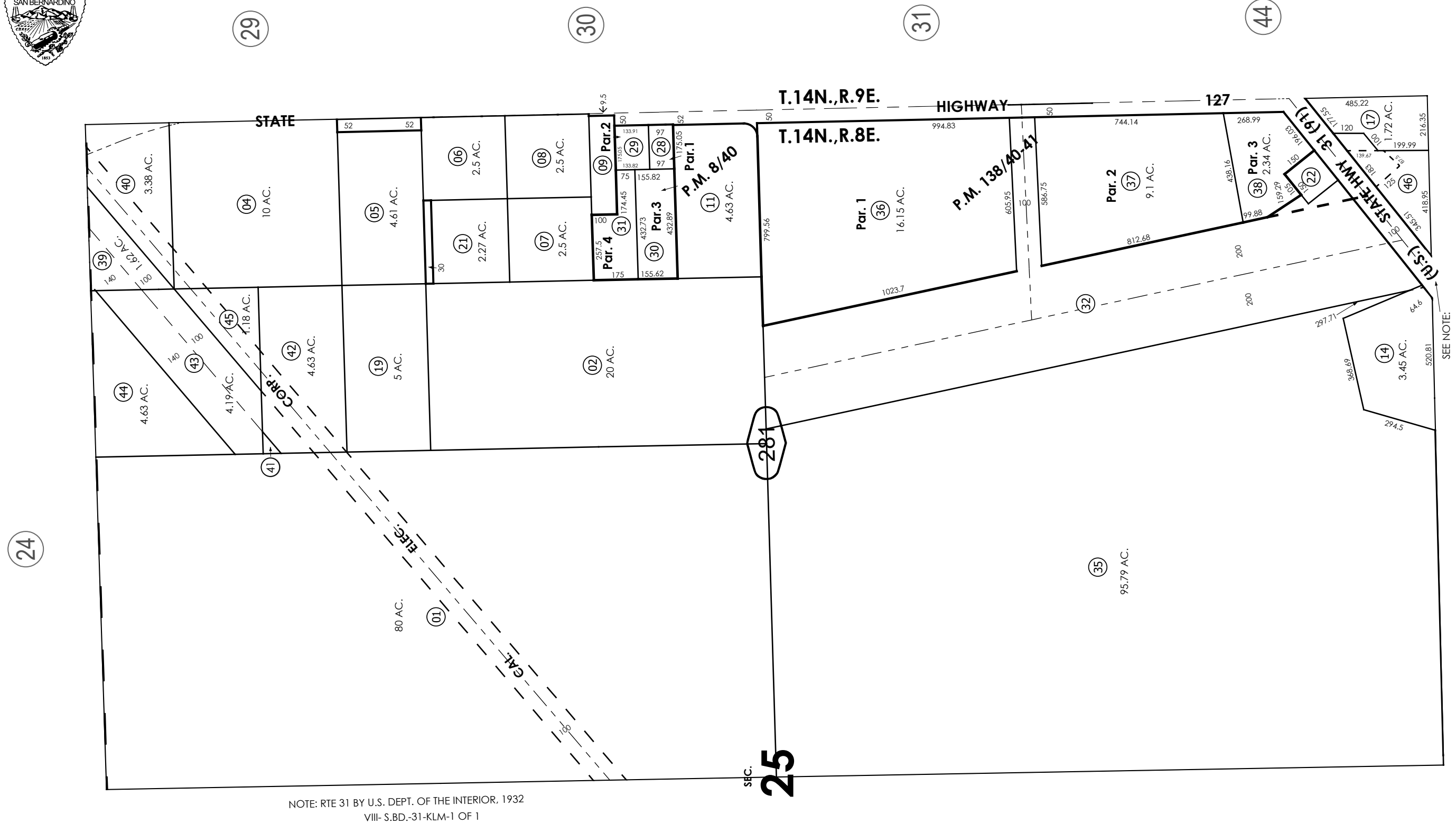
THIS MAP IS FOR THE PURPOSE  
OF AD VALOREM TAXATION ONLY.



E.1/2, Sec.25, T.14N.,R.8E., S.B.B.&M.

Baker Unified  
Tax Rate Area  
55005

0544 - 28



NOTE: RTE 31 BY U.S. DEPT. OF THE INTERIOR, 1932  
VIII-S.BD.-31-KLM-1 OF 1

June 2005

Parcel Map No. 897, P.M. 8/40  
Parcel Map No. 8651, P.M. 138/40-41

Assessor's Map  
Book 0544 Page 28  
San Bernardino County

REVISED  
12/08/25 KC