

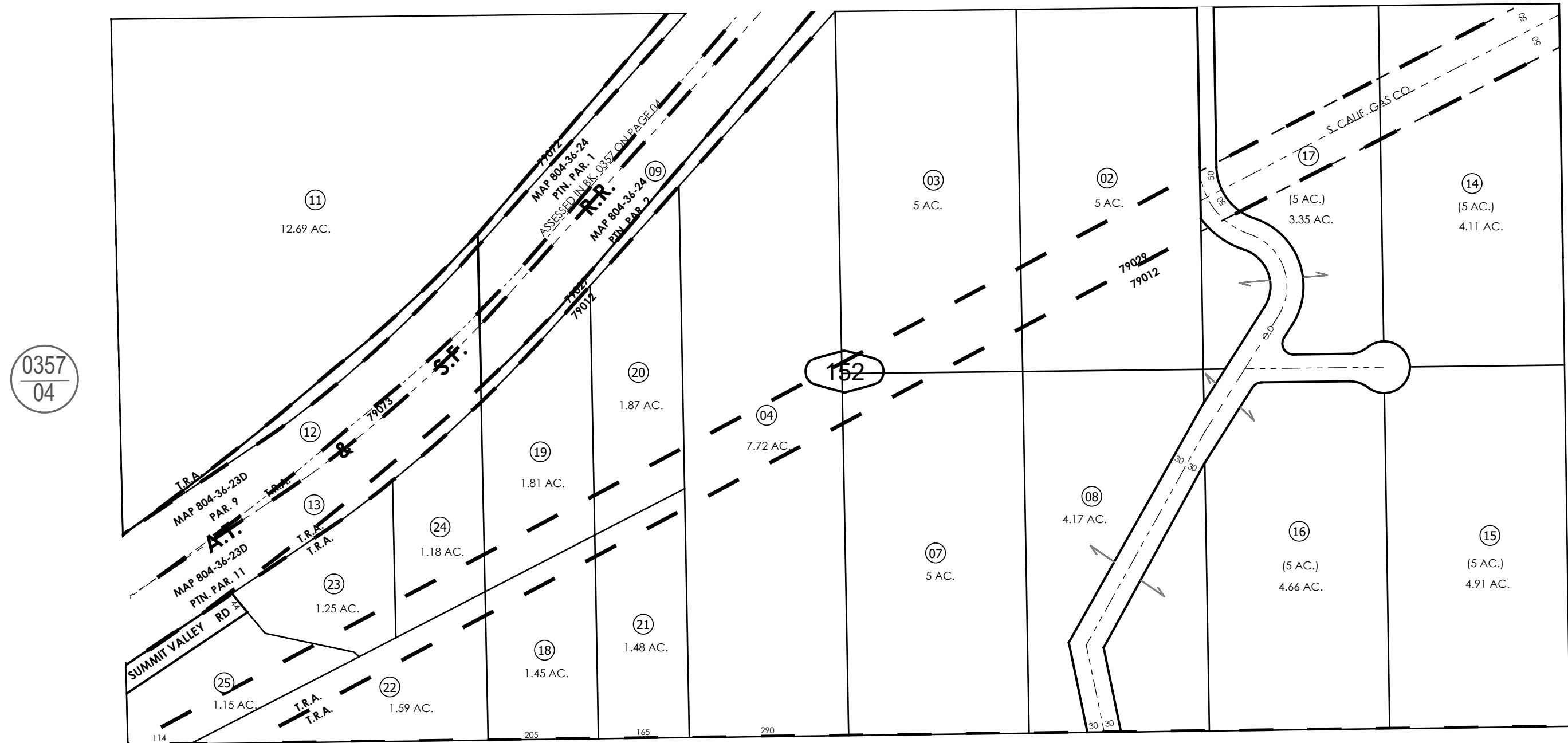
THIS MAP IS FOR THE PURPOSE
OF AD VALOREM TAXATION ONLY.



S.1/2, S.E.1/4, Sec.11, T.3N.,R.5W., S.B.B.&M.

Hesperia Unified
Tax Rate Area
79012,79027,79029
79072,79073

0405 - 15



39

18

REVISED
11/17/25 BS

Assessor's Map
Book 0405 Page 15
San Bernardino County