

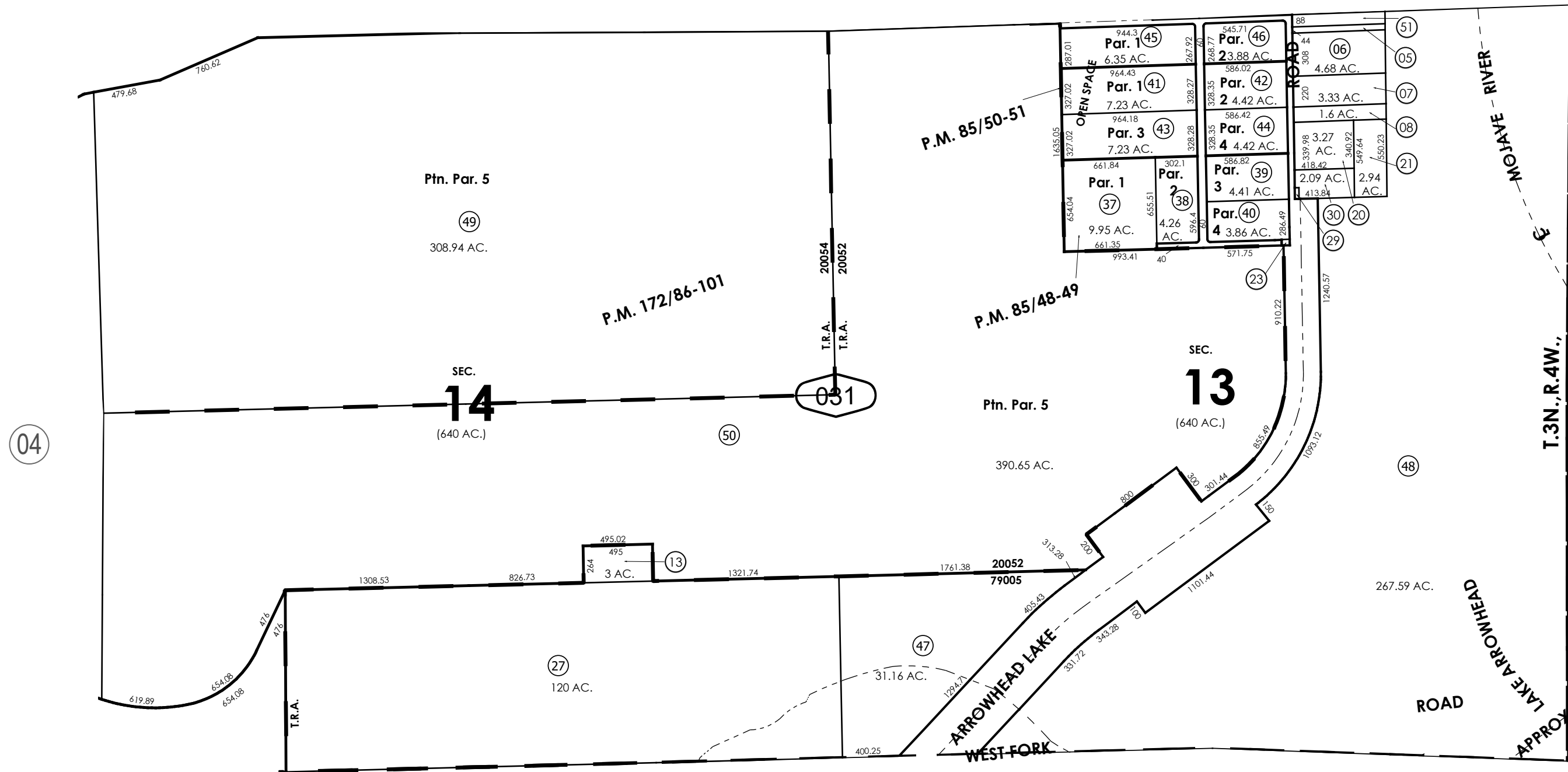
THIS MAP IS FOR THE PURPOSE  
OF AD VALOREM TAXATION ONLY.



Sec.13&14, T.3N.,R.4W., S.B.B.&M.

City of Hesperia  
Hesperia Unified  
20052 20054  
Tax Rate Area  
79005

0397 - 03



0433  
12

0357  
18

0357  
29

Parcel Map No. 8150, P.M. 85/48-49  
Parcel Map No. 8151, P.M. 85/50-51  
Parcel Map No. 8152, P.M. 85/52  
Ptn. Parcel Map No. 13471, P.M. 172/86-101

Assessor's Map  
Book 0397 Page 03  
San Bernardino County

REVISED  
11/24/25 BS

March 2004