

THIS MAP IS FOR THE PURPOSE
OF AD VALOREM TAXATION ONLY.

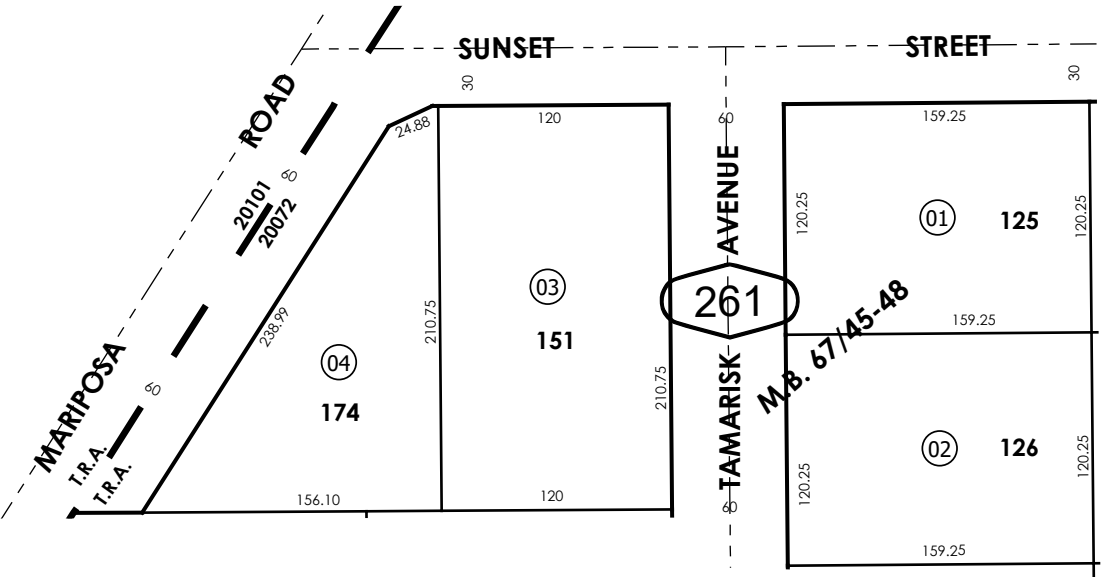


Ptn. Tract No. 5497, M.B. 67/45-48

25

City of Hesperia
Tax Rate Area
20072,20101

3072 - 26



30

25

27

31

REVISED
10/07/25 CA

Ptn. S.E. 1/4, Sec. 1
T.4N., R.5W.

Assessor's Map
Book 3072 Page 26
San Bernardino County