

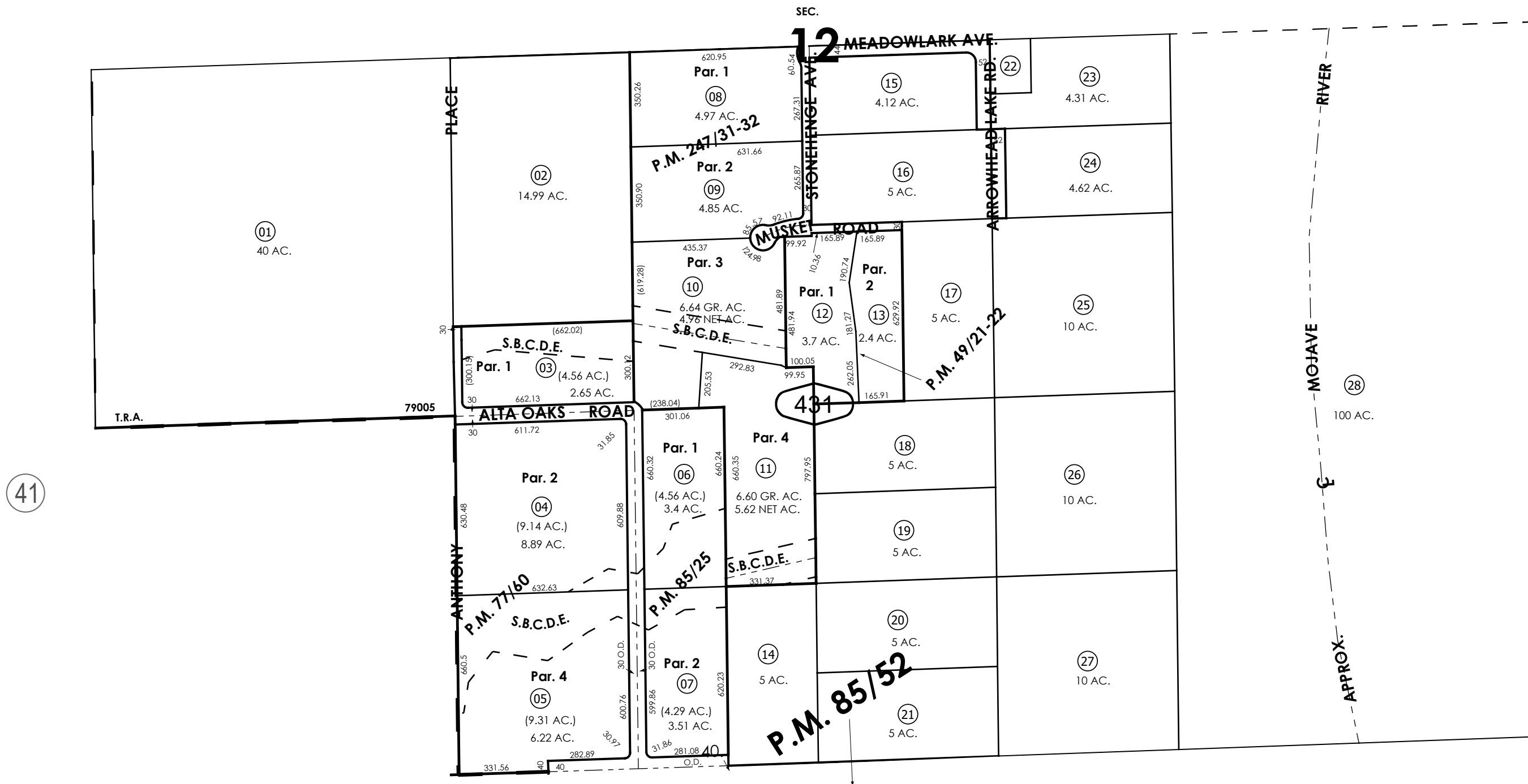
THIS MAP IS FOR THE PURPOSE
OF AD VALOREM TAXATION ONLY.



S.1/2, Sec.12, T.3N.,R.4W., S.B.B.&M.

City of Hesperia
Hesperia Unified
Tax Rate Area
79005

3027 - 43



0433
12

0397
03

REVISÉD

Assessor's Map
Book 3027 Page 43
San Bernardino County

Parcel Map No. 5123, P.M. 49/21-22
Ptn. Parcel Map No. 7464, P.M. 77/60
Parcel Map No. 8153, P.M. 85/25
Parcel Map No. 19015, 247/31-32

September 2025 BS