

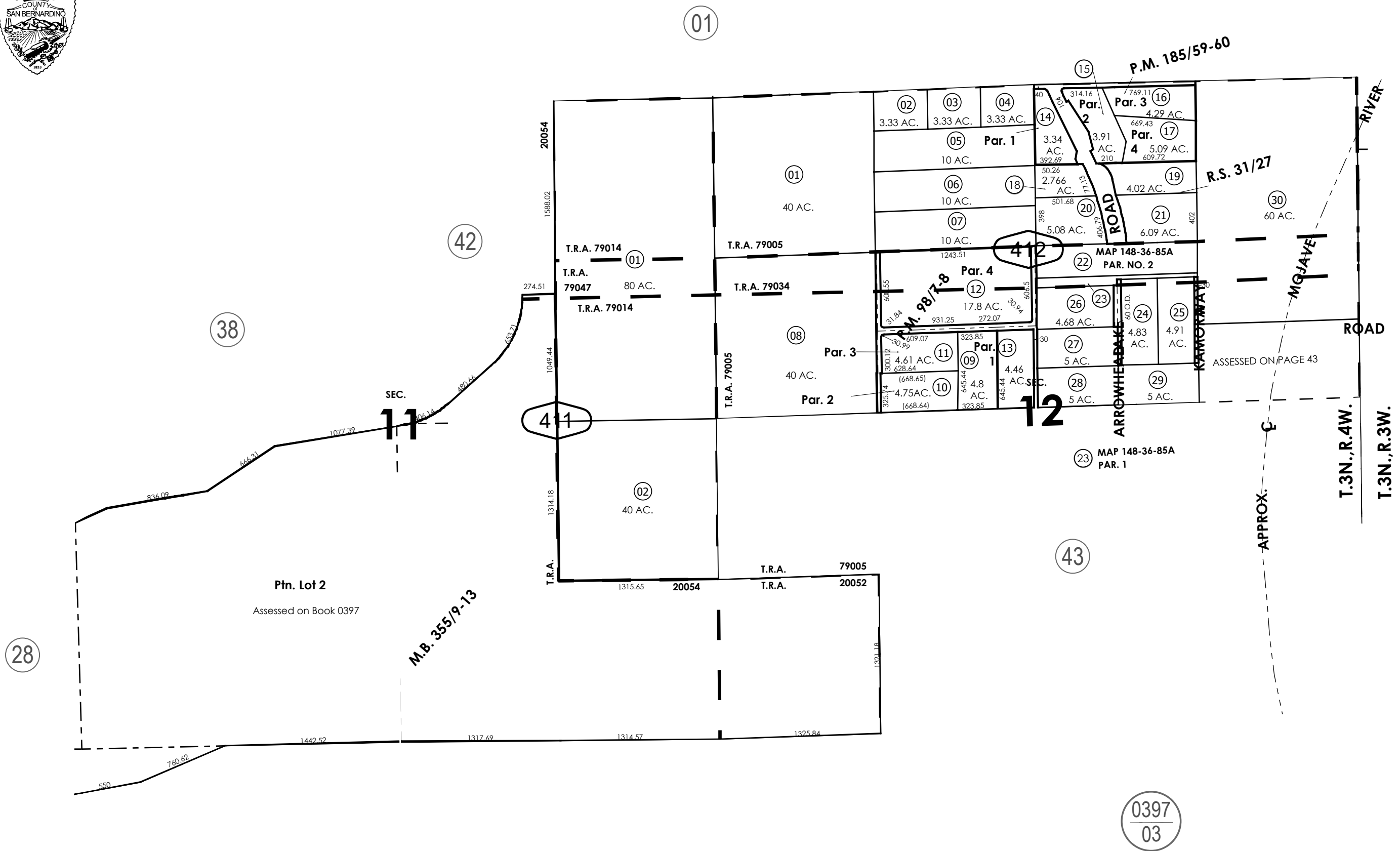
THIS MAP IS FOR THE PURPOSE  
OF AD VALOREM TAXATION ONLY.



Sec.11&12, T.3N.,R.4W., S.B.B.&M.

City of Hesperia  
Hesperia Unified  
20052 20054 79005  
79014 79034 79047

3027 - 41



REVISED

Assessor's Map  
Book 3027 Page 41  
San Bernardino County

Parcel Map No. 8790, P.M. 98/7-8  
Parcel Map No. 15088, P.M. 185/59-60  
Ptn. Tract No. 18985-1, M.B. 355/9-13

September 2025 BS Ptn. Tract No. 18985-1, M.B. 355/9-13