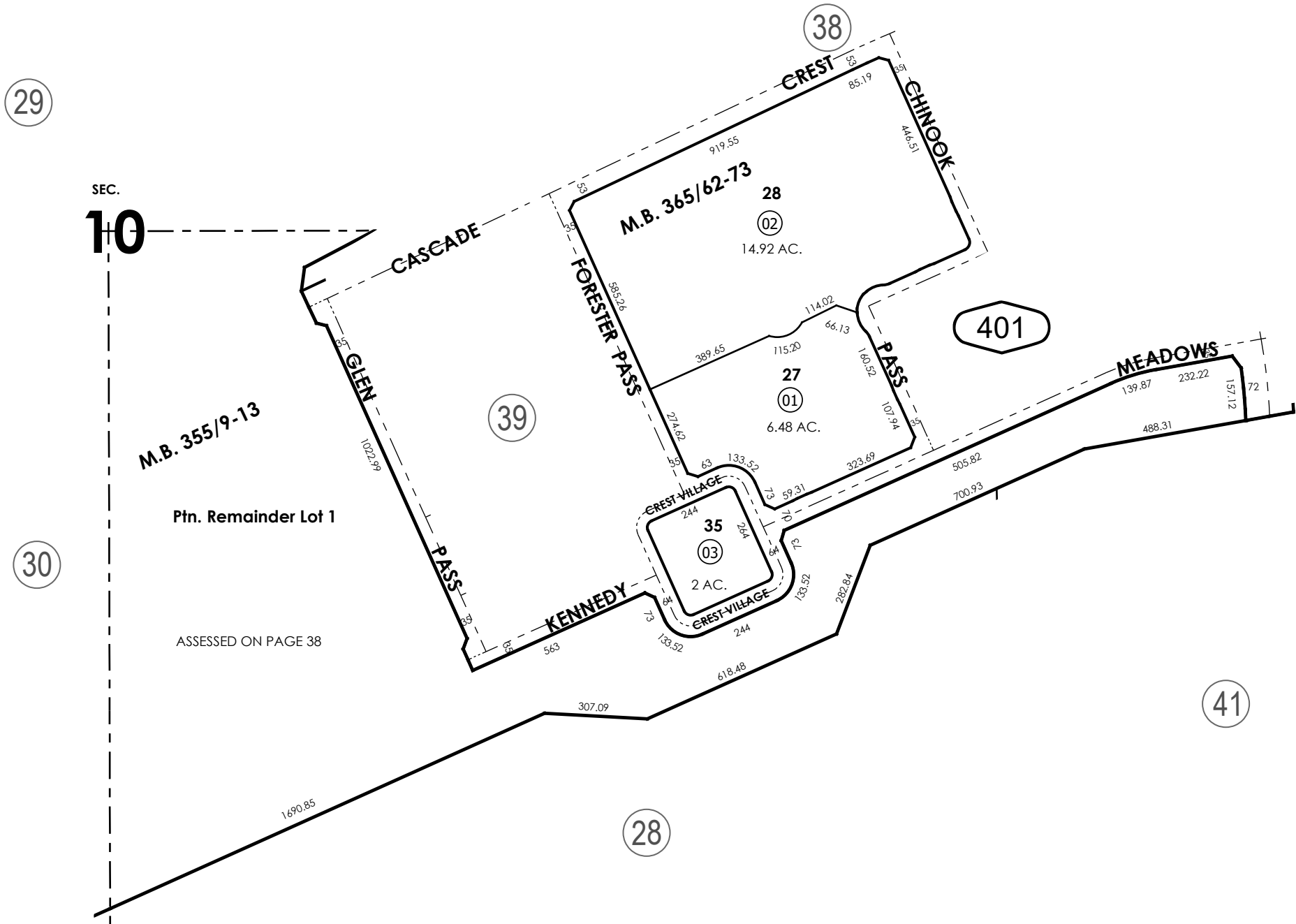


THIS MAP IS FOR THE PURPOSE
OF AD VALOREM TAXATION ONLY.



Ptn. Tract No. 18989-1, M.B. 365/62-73

City of Hesperia
Tax Rate Area
20054



REVISED

Ptn. E.1/2, Sec. 10
T.3N., R.4W.

Assessor's Map
Book 3027 Page 40
San Bernardino County