

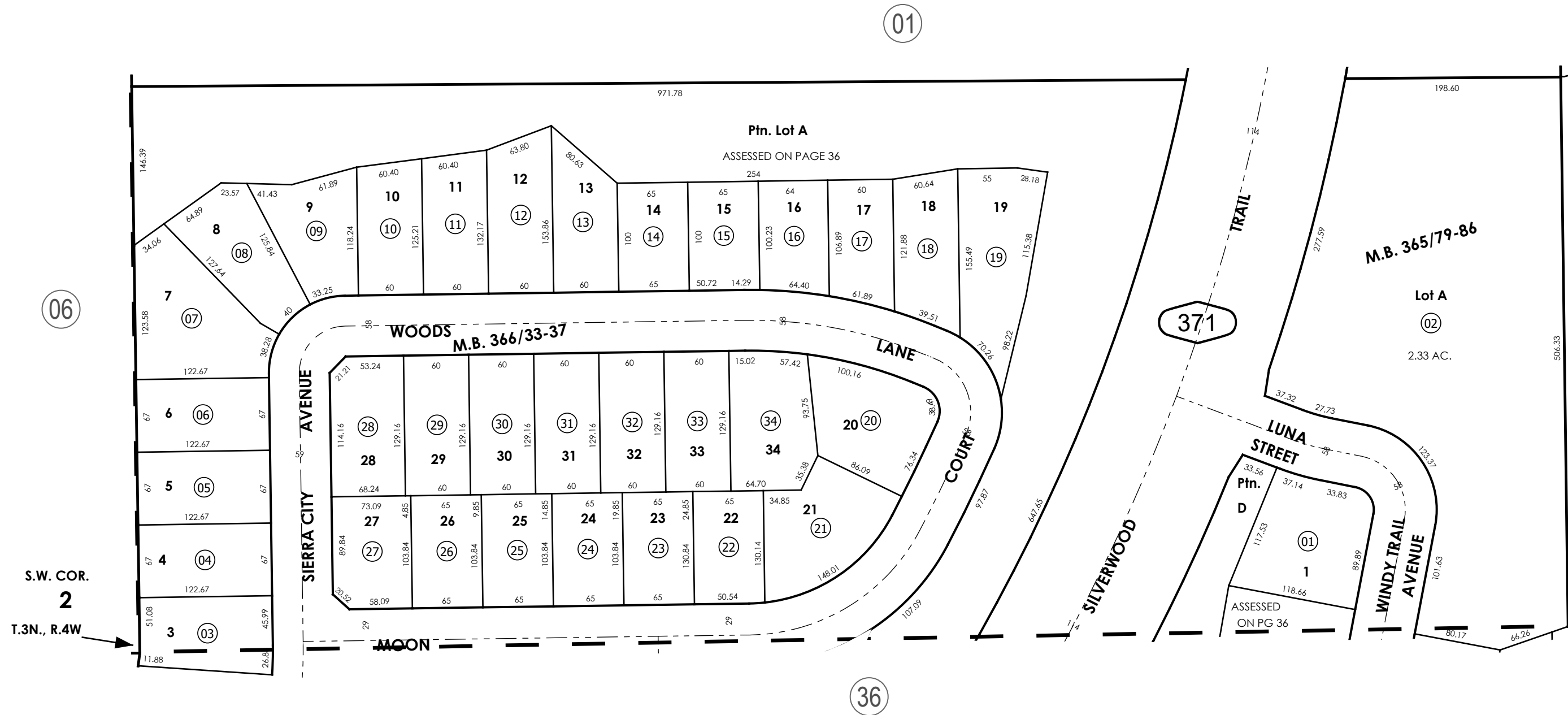
THIS MAP IS FOR THE PURPOSE  
OF AD VALOREM TAXATION ONLY.



Ptn. Tract No. 18955-4, M.B. 365/79-86

City of Hesperia  
Tax Rate Area  
20027

3027 - 37



REVISED

Ptn. S.W.1/4, Sec. 2  
T.3N., R.4W.

Assessor's Map  
Book 3027 Page 37  
San Bernardino County