

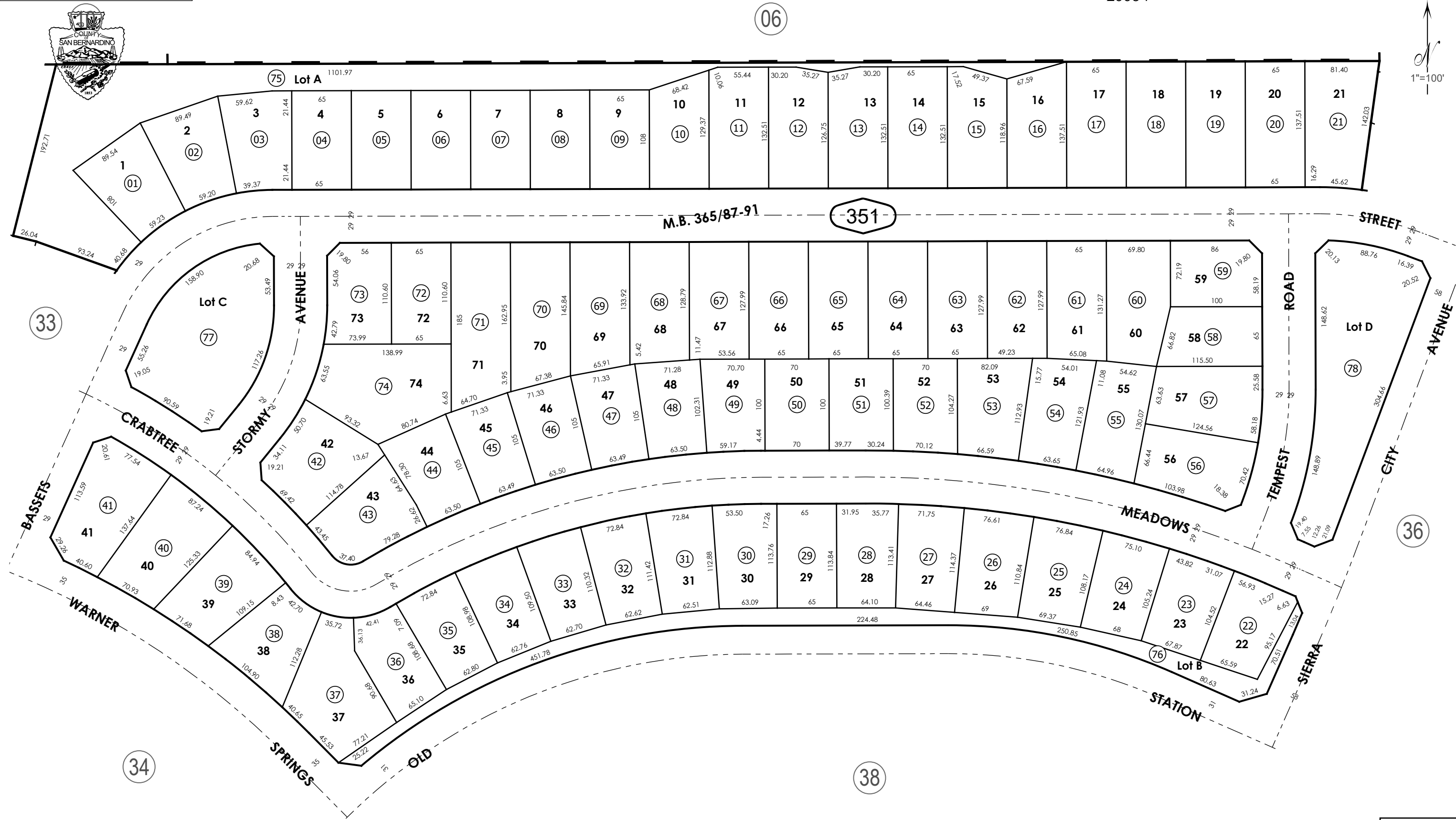
THIS MAP IS FOR THE PURPOSE  
OF AD VALOREM TAXATION ONLY.

Tract No. 18955-6, M.B. 365/87-91

City of Hesperia  
Tax Rate Area  
20054

3027 - 35

06



Ptn. N.1/2, Sec. 10  
T.3N., R.4W.

Assessor's Map  
Book 3027 Page 35  
San Bernardino County

REVISED