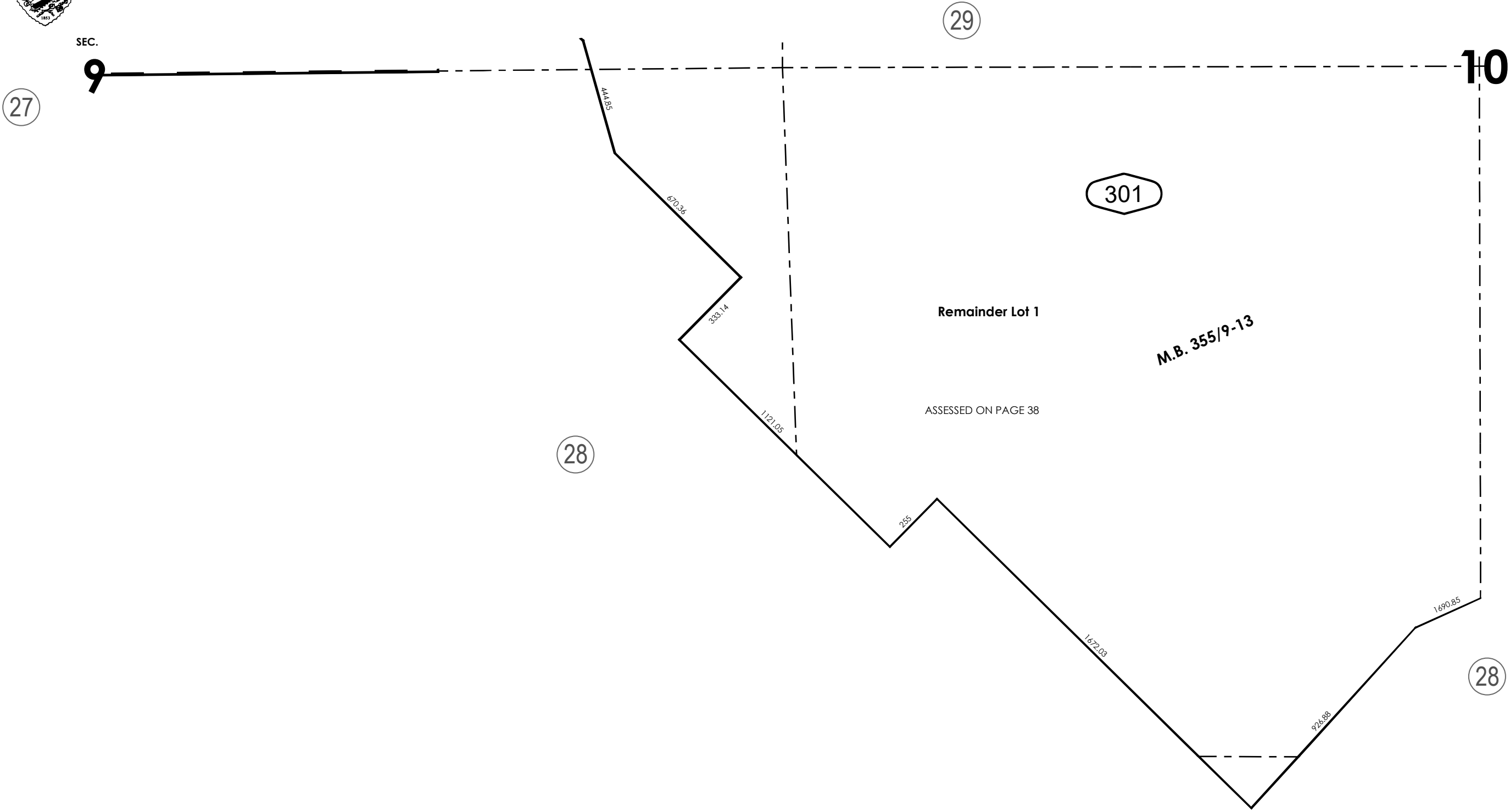


THIS MAP IS FOR THE PURPOSE
OF AD VALOREM TAXATION ONLY.

Ptn. Tract No. 18985-1, M.B. 355/9-13

City of Hesperia
Tax Rate Area
20054

3027 - 30



Ptn. S.1/2, Sec. 9 AND 10
T.3N., R.4W.

Assessor's Map
Book 3027 Page 30
San Bernardino County

REVISED