

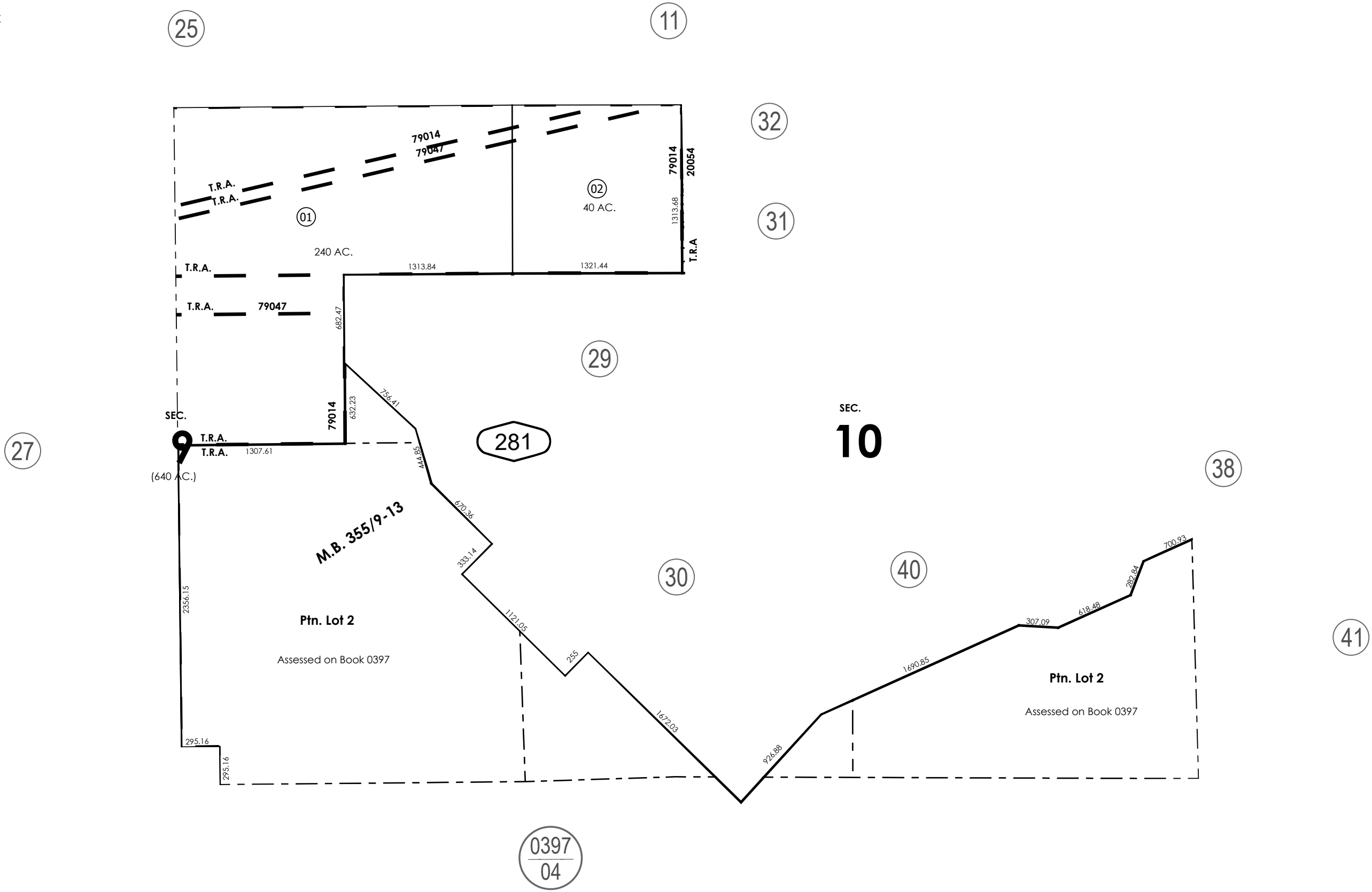
THIS MAP IS FOR THE PURPOSE
OF AD VALOREM TAXATION ONLY.



Sec.10 & E.1/2 Sec.9, T.3N.,R.4W., S.B.B.&M.

City of Hesperia
Hesperia Unified
20054 79014 79047

3027 - 28



Assessor's Map
Book 3027 Page 28
San Bernardino County

REVISED