

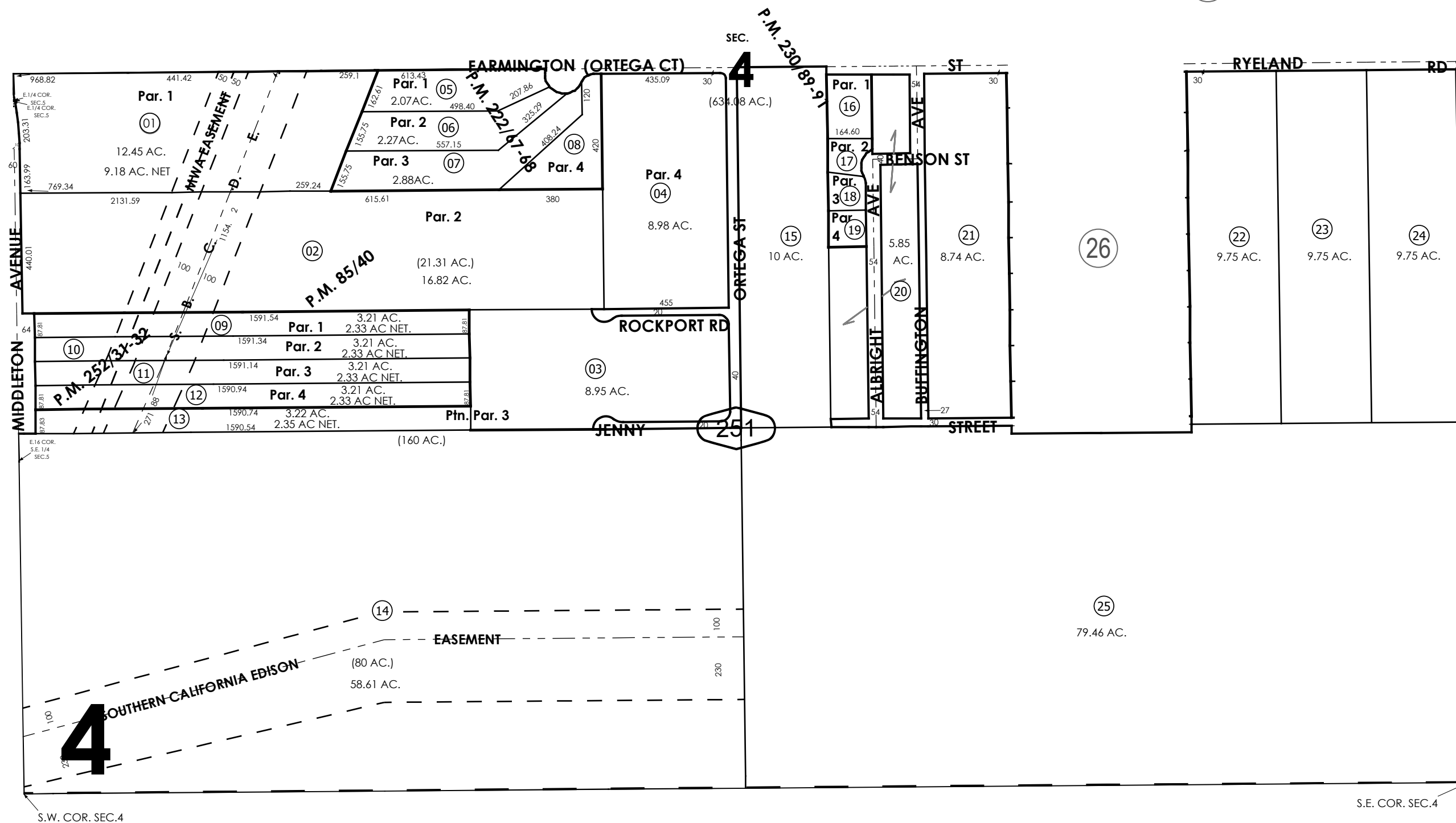
THIS MAP IS FOR THE PURPOSE
OF AD VALOREM TAXATION ONLY.



S.1/2, Fractional Sec.4, T.3N.,R.4W., S.B.B.&M.

City of Hesperia
Tax Rate Area
20010

3027 - 25



Parcel Map No. 7010, P.M. 85/40
Parcel Map No. 16952, P.M. 222/67-68
Parcel Map No. 18312, P.M. 230/89-91
Parcel Map No. 19976, P.M. 252/31-32

Assessor's Map
Book 3027 Page 25
San Bernardino County

REVISED