

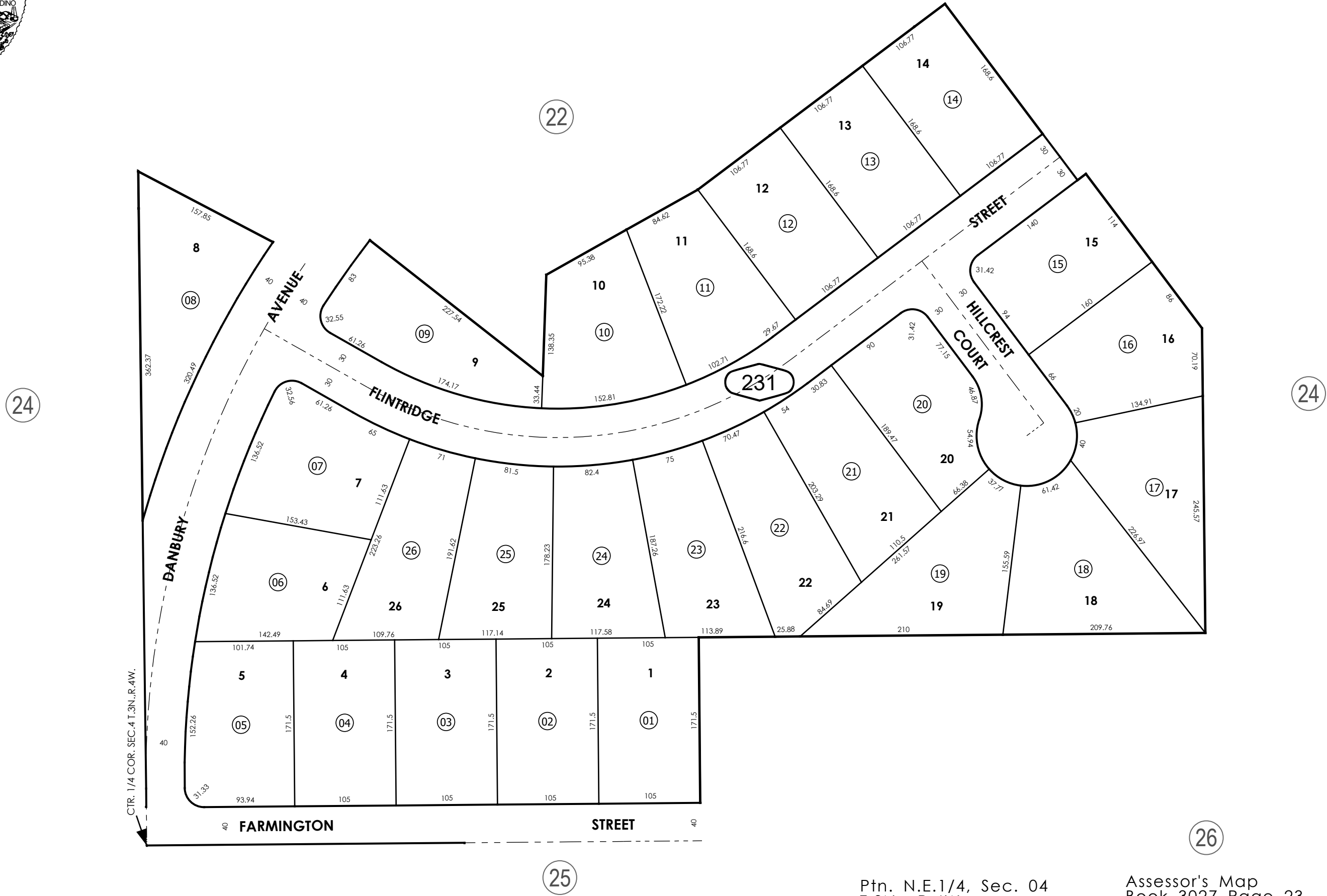
THIS MAP IS FOR THE PURPOSE  
OF AD VALOREM TAXATION ONLY.



Tract No. 6065-4, M.B. 241/46-48

City of Hesperia  
Tax Rate Area  
20010

3027 - 23



Ptn. N.E.1/4, Sec. 04  
T.3N., R.4W.

Assessor's Map  
Book 3027 Page 23  
San Bernardino County

REVISED