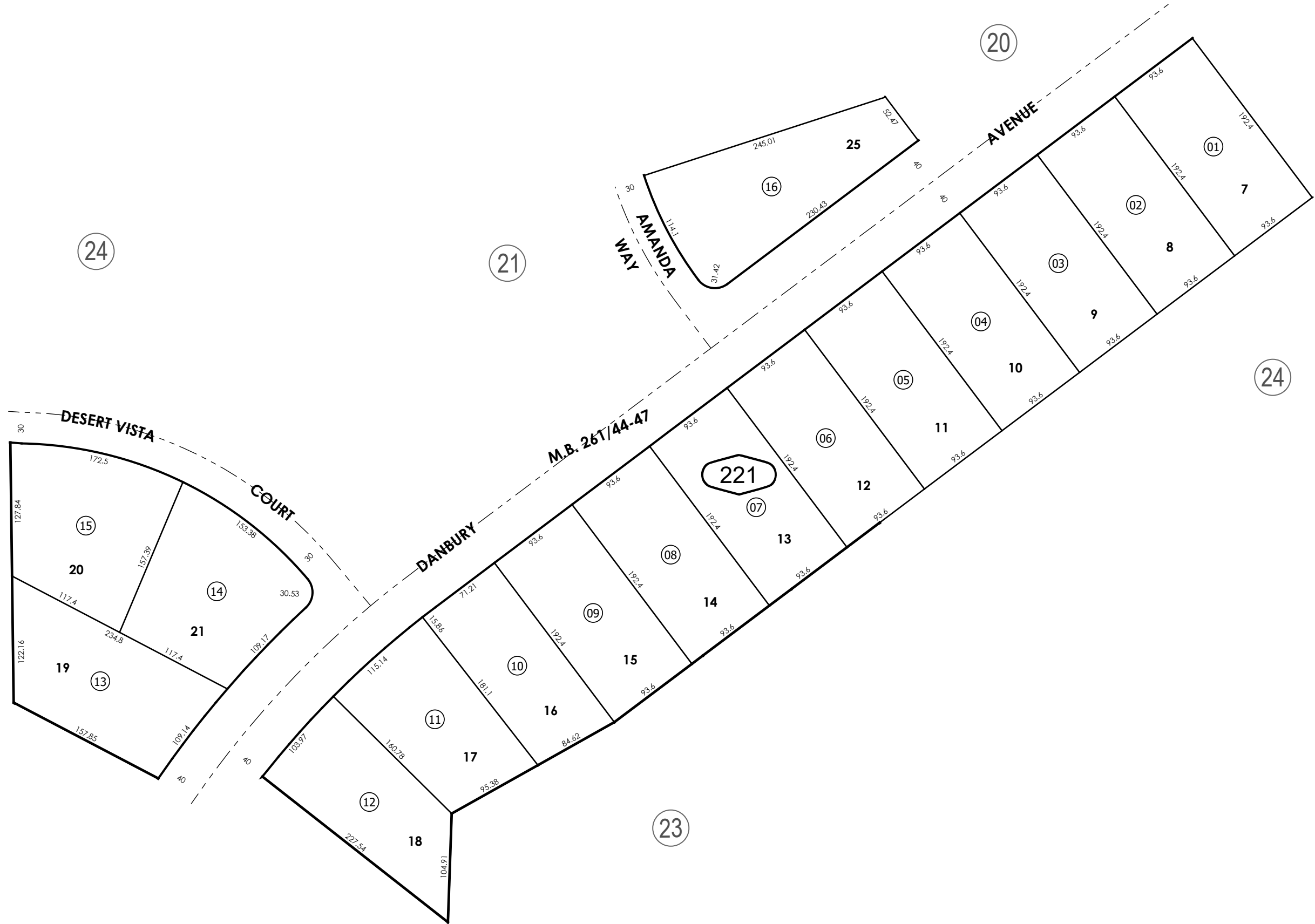


THIS MAP IS FOR THE PURPOSE  
OF AD VALOREM TAXATION ONLY.



Ptn. Tract No. 6065-3, M.B. 241/43-45  
Amended M.B. 261/44-47

City of Hesperia  
Tax Rate Area  
20010



Ptn. N.E.1/4, Sec. 04  
T.3N., R.4W.

Assessor's Map  
Book 3027 Page 22  
San Bernardino County

REVISED