

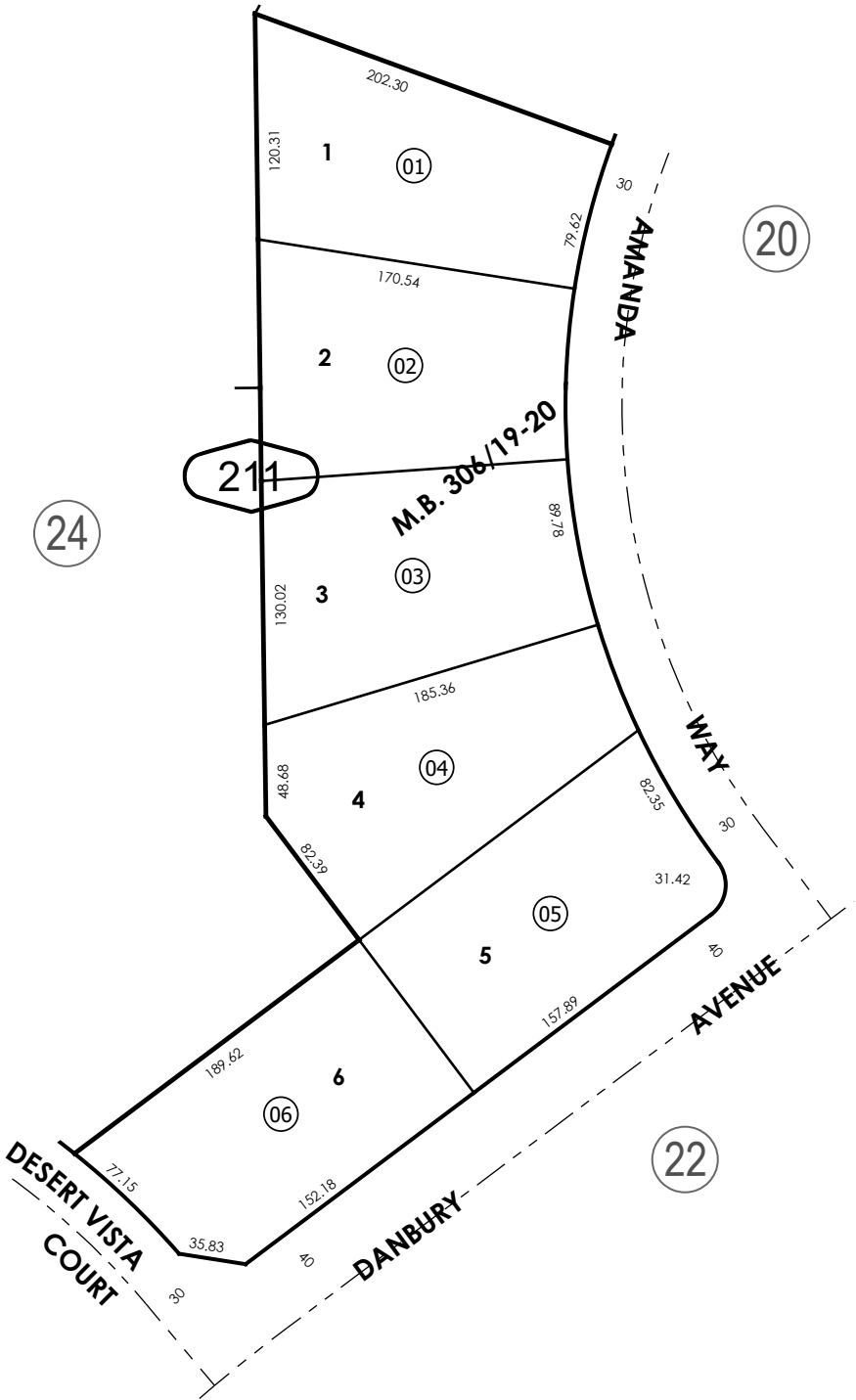
THIS MAP IS FOR THE PURPOSE  
OF AD VALOREM TAXATION ONLY.



Tract No. 16789, M.B. 306/19-20

City of Hesperia  
Tax Rate Area  
20010

3027 - 21



Ptn. N.1/2, Sec. 04  
T.3N., R.4W.

Assessor's Map  
Book 3027 Page 21  
San Bernardino County

REVISED