

THIS MAP IS FOR THE PURPOSE
OF AD VALOREM TAXATION ONLY.



Ptn. Tract No. 6065-2, M.B. 222/63-65
Amended M.B. 261/41-43

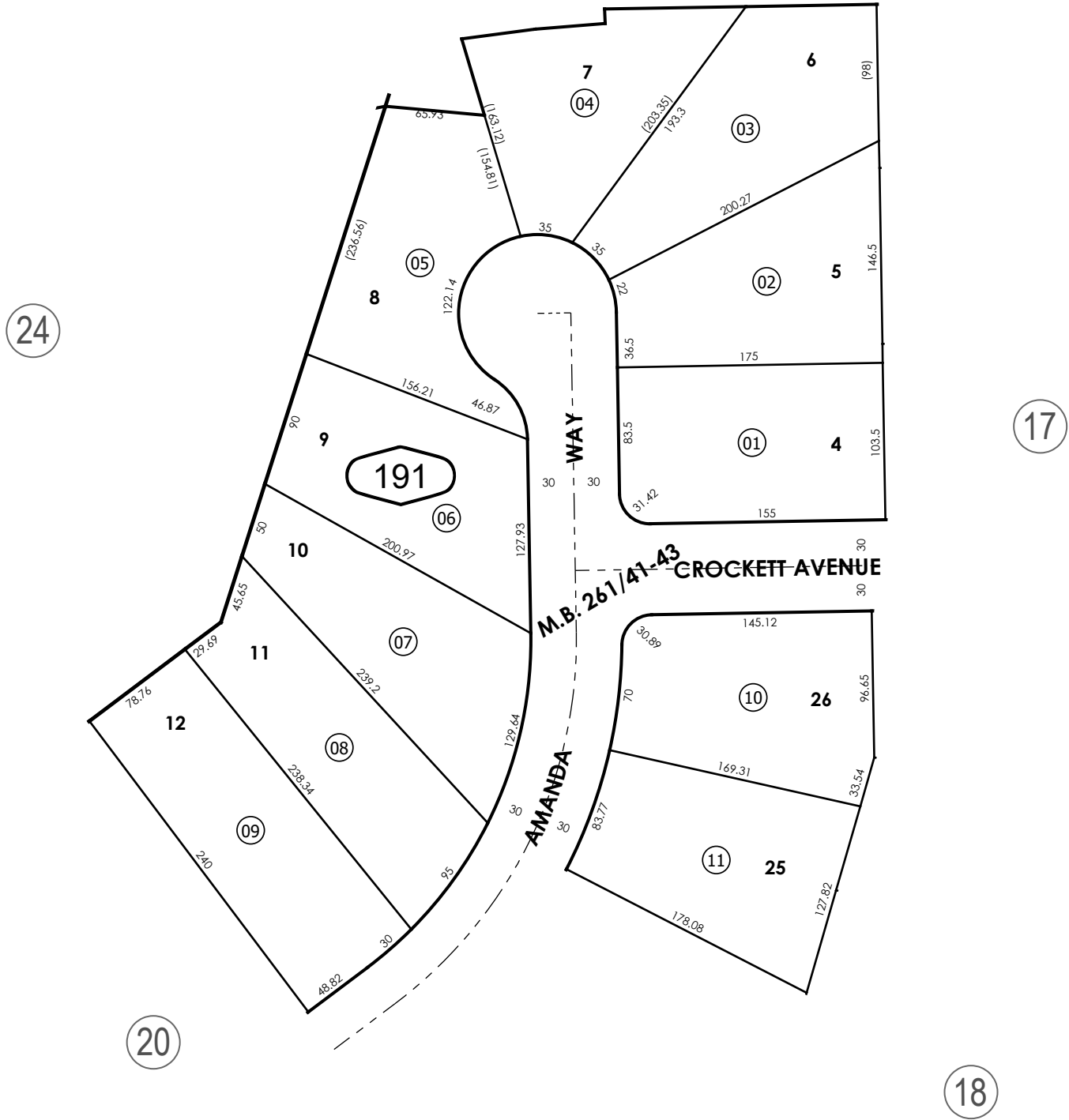
City of Hesperia
Tax Rate Area
20010

3027 - 19



0398
04

RANCHERO STREET



Ptn. N.E.1/4, Sec. 4
T.3N., R.4W.

Assessor's Map
Book 3027 Page 19
San Bernardino County

REVISED