

THIS MAP IS FOR THE PURPOSE
OF AD VALOREM TAXATION ONLY.



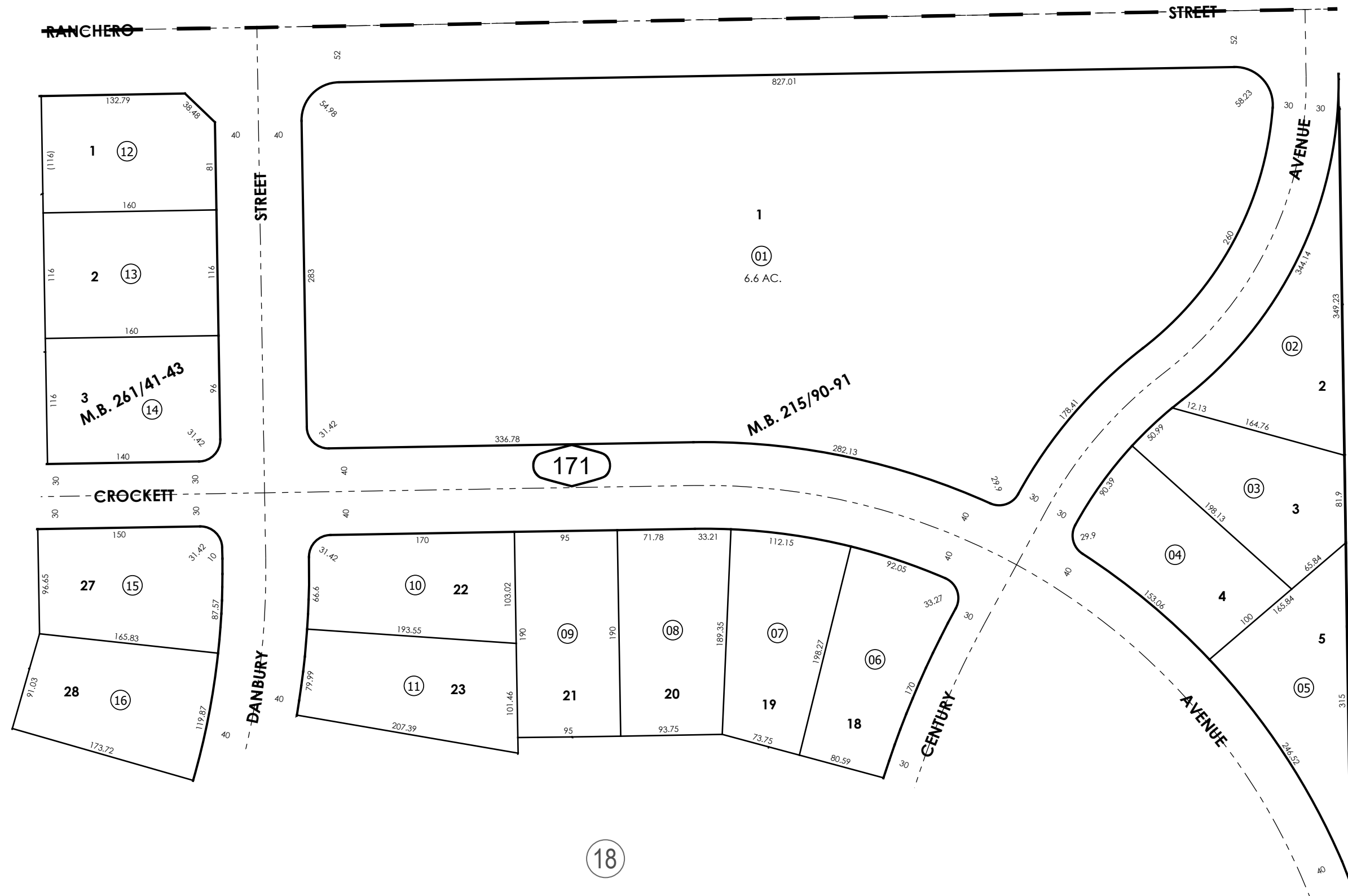
Ptn. Tract No. 6065-1, M.B. 215/90-91

City of Hesperia
Tax Rate Area
20010

3027 - 17

 $1'' = 100'$

0398
04



REVISED

Ptn. N.E.1/4, Sec. 04
T.3N., R.4W.

Assessor's Map
Book 3027 Page 17
San Bernardino County