

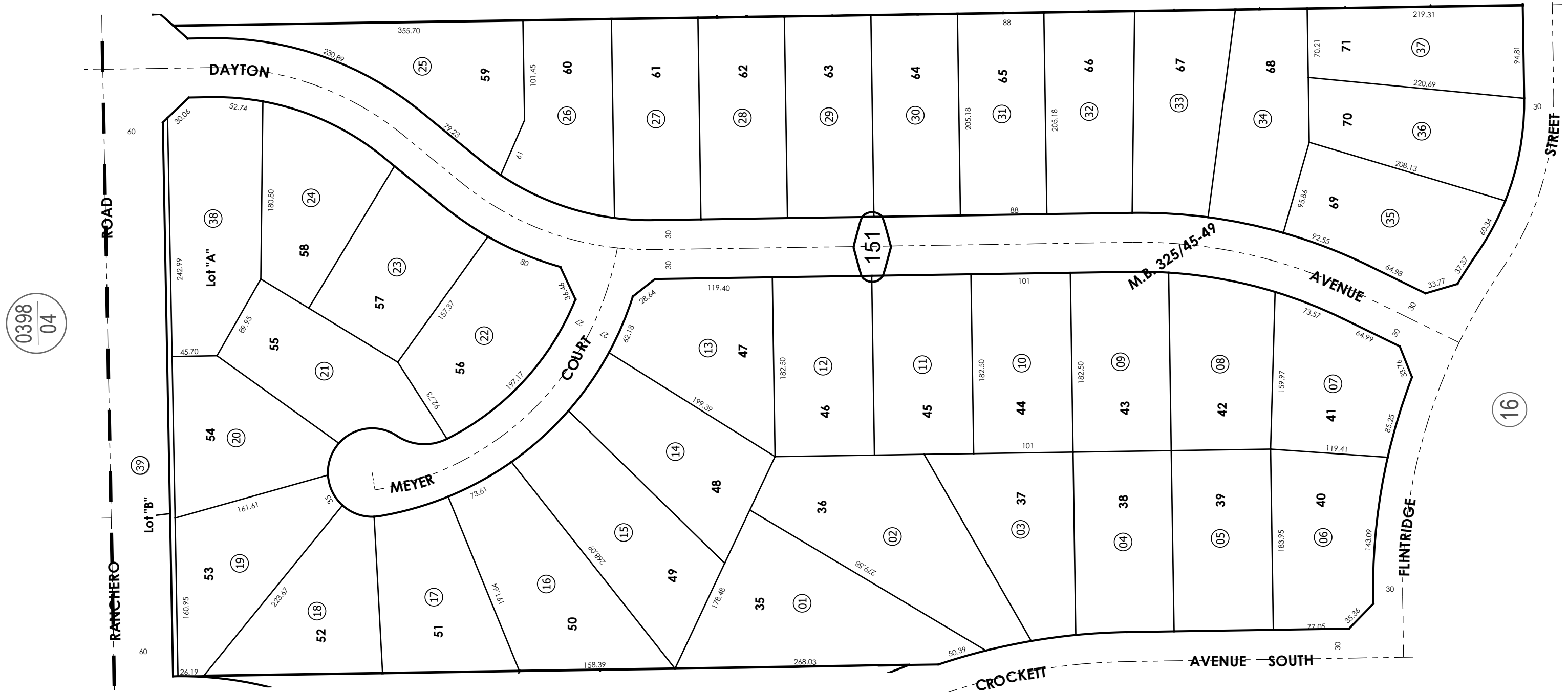
THIS MAP IS FOR THE PURPOSE
OF AD VALOREM TAXATION ONLY.



Ptn. Tract No. 14937, M.B. 325/45-49

City of Hesperia
Tax Rate Area
20010

3027 - 15



0398
04

16

24

17

18

14

Ptn. N.W.1/4, Sec. 03
T.3N., R.4W.

Assessor's Map
Book 3027 Page 15
San Bernardino County

REVISED