

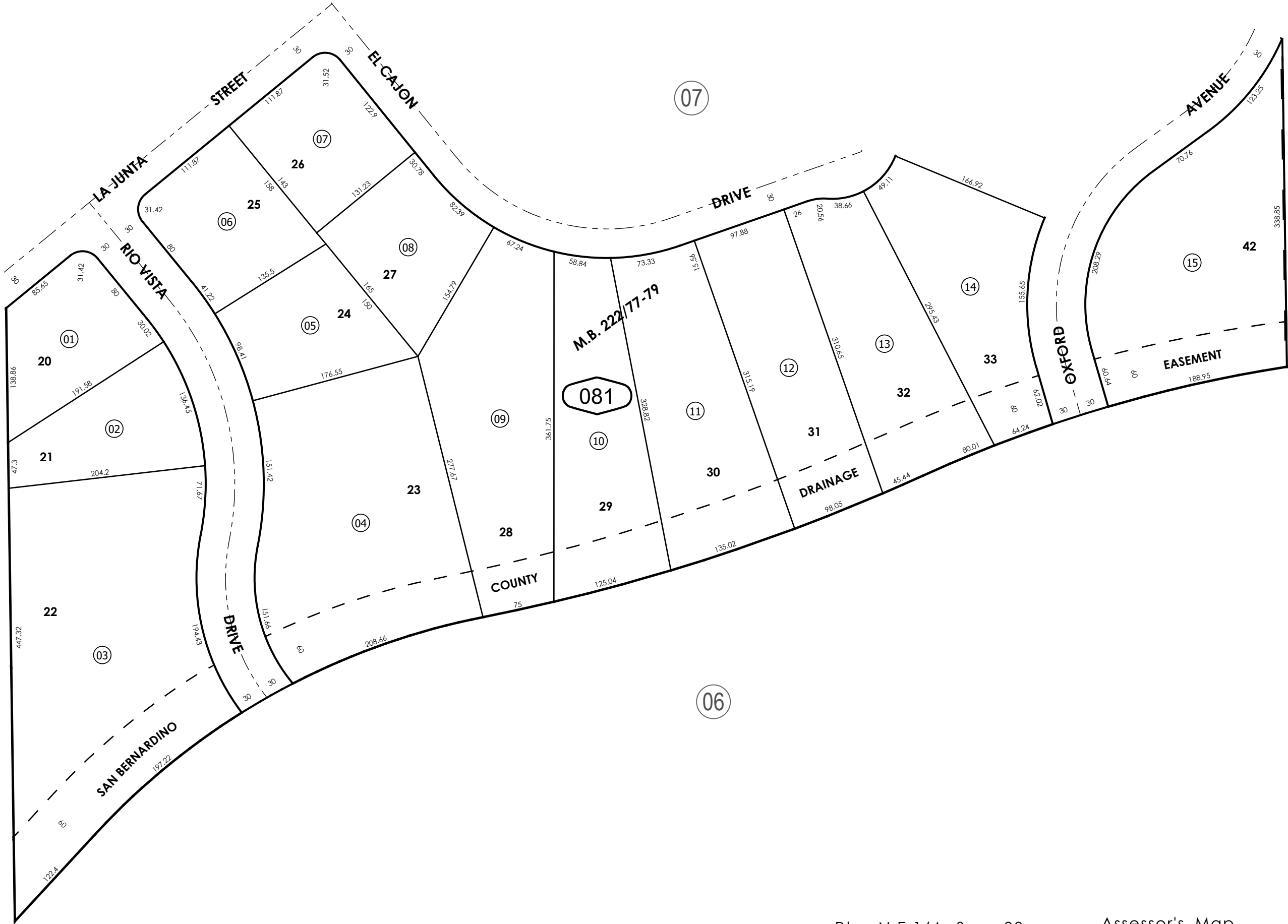
THIS MAP IS FOR THE PURPOSE  
OF AD VALOREM TAXATION ONLY.



Ptn. Tract No. 10717, M.B. 222/77-79

City of Hesperia  
Tax Rate Area  
20010

3027 - 08



Ptn. N.E.1/4, Sec. 03  
T.3N., R.4W.

Assessor's Map  
Book 3027 Page 08  
San Bernardino County

REVISED