

THIS MAP IS FOR THE PURPOSE
OF AD VALOREM TAXATION ONLY.



Ptn. Tract No. 10717, M.B. 222/77-79

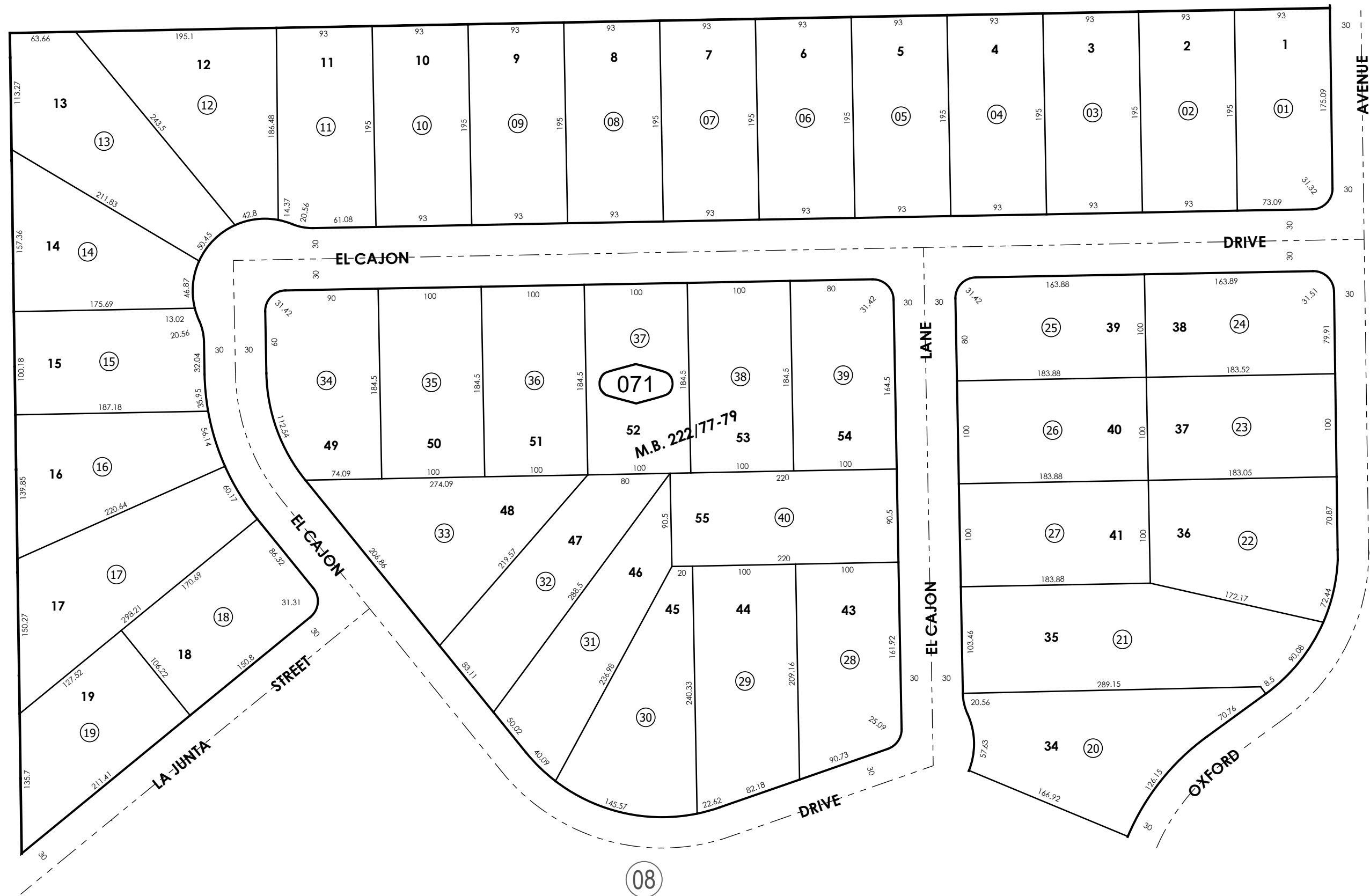
City of Hesperia
Tax Rate Area
20010

3027 - 07



09

01



08

Ptn. N.E.1/4, Sec. 03
T.3N., R.4W.

Assessor's Map
Book 3027 Page 07
San Bernardino County

REVISED