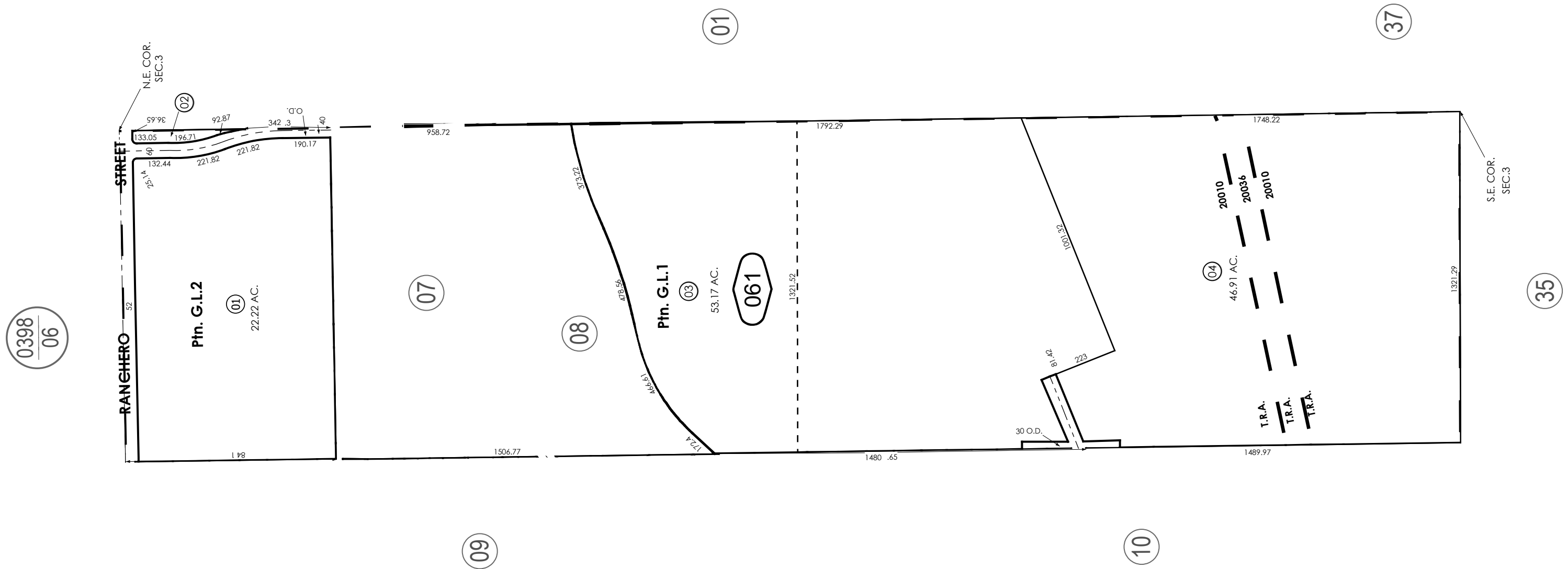


THIS MAP IS FOR THE PURPOSE  
OF AD VALOREM TAXATION ONLY.

E.1/2, E.1/2, Fractional Sec.3, T.3N.,R.4W., S.B.B.&M.

City of Hesperia  
20010 20036

3027 - 06



REVISED

Assessor's Map  
Book 3027 Page 06  
San Bernardino County