

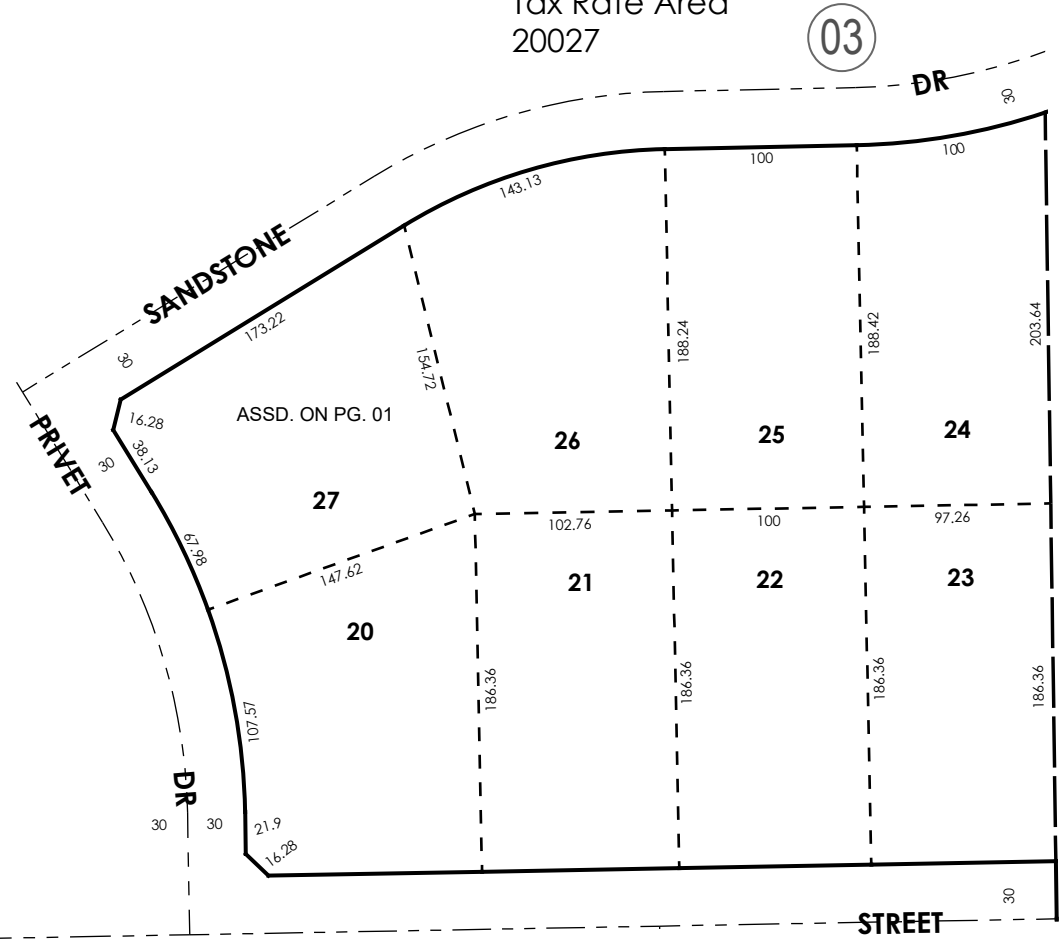
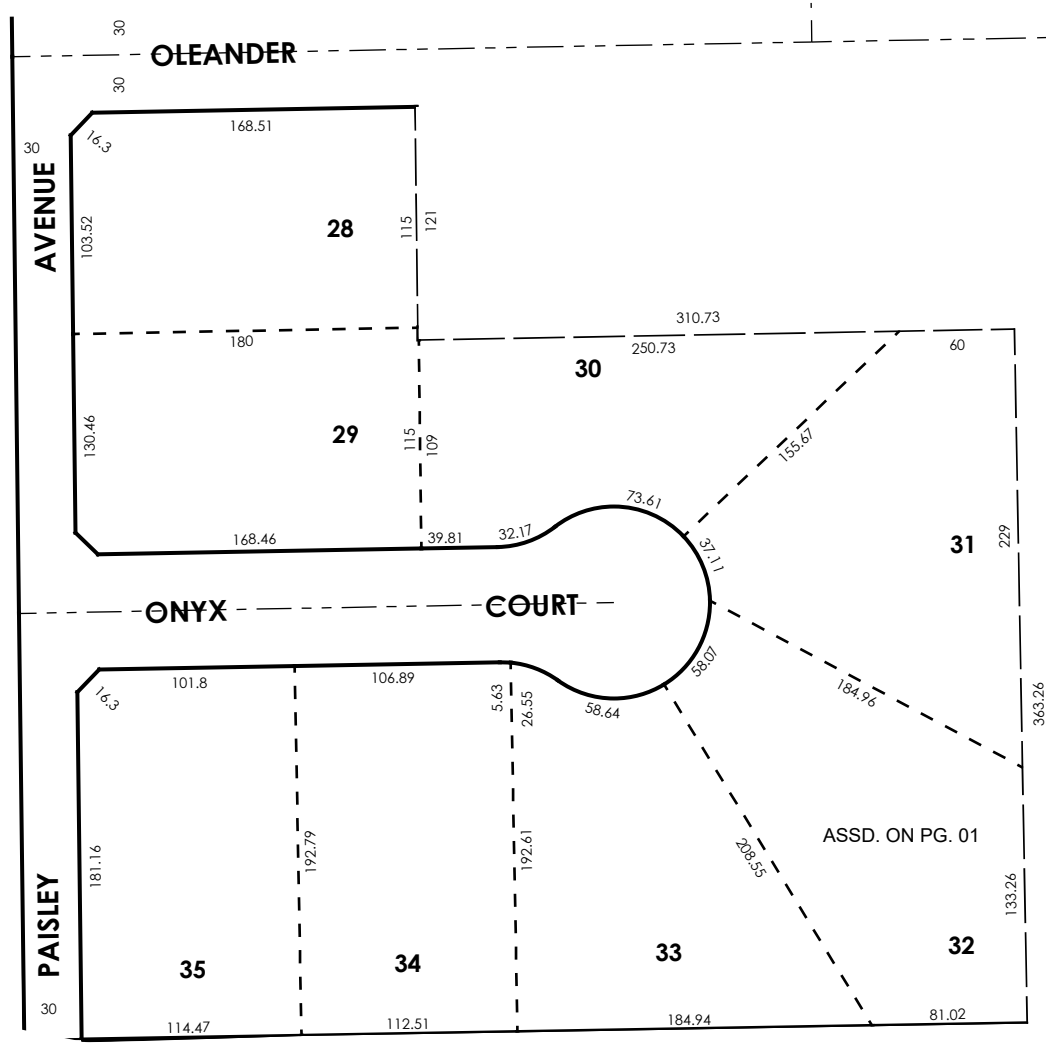
THIS MAP IS FOR THE PURPOSE
OF AD VALOREM TAXATION ONLY.



Ptn. Tract No. 14045-1, M.B. 250/73-79

City of Hesperia
Tax Rate Area
20027

3027 - 05



Ptn. N.E.1/4, Sec. 02
T.3N., R.4W.

Assessor's Map
Book 3027 Page 05
San Bernardino County

REVISED