

THIS MAP IS FOR THE PURPOSE
OF AD VALOREM TAXATION ONLY.



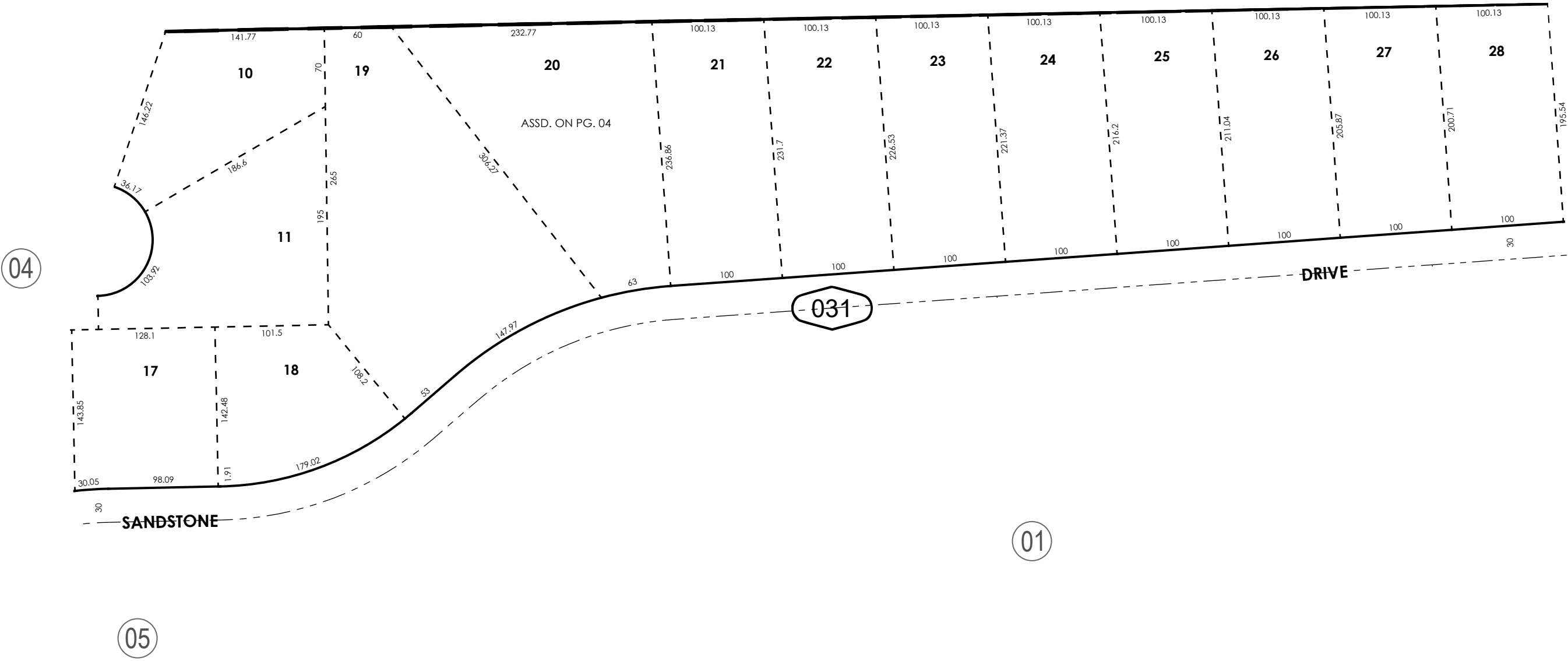
Ptn. Tract No. 14045-1, M.B. 248/85-91

City of Hesperia
Tax Rate Area
20027

3027 - 03



0398
19



Assessor's Map
Book 3027 Page 03
San Bernardino County

REVISED