

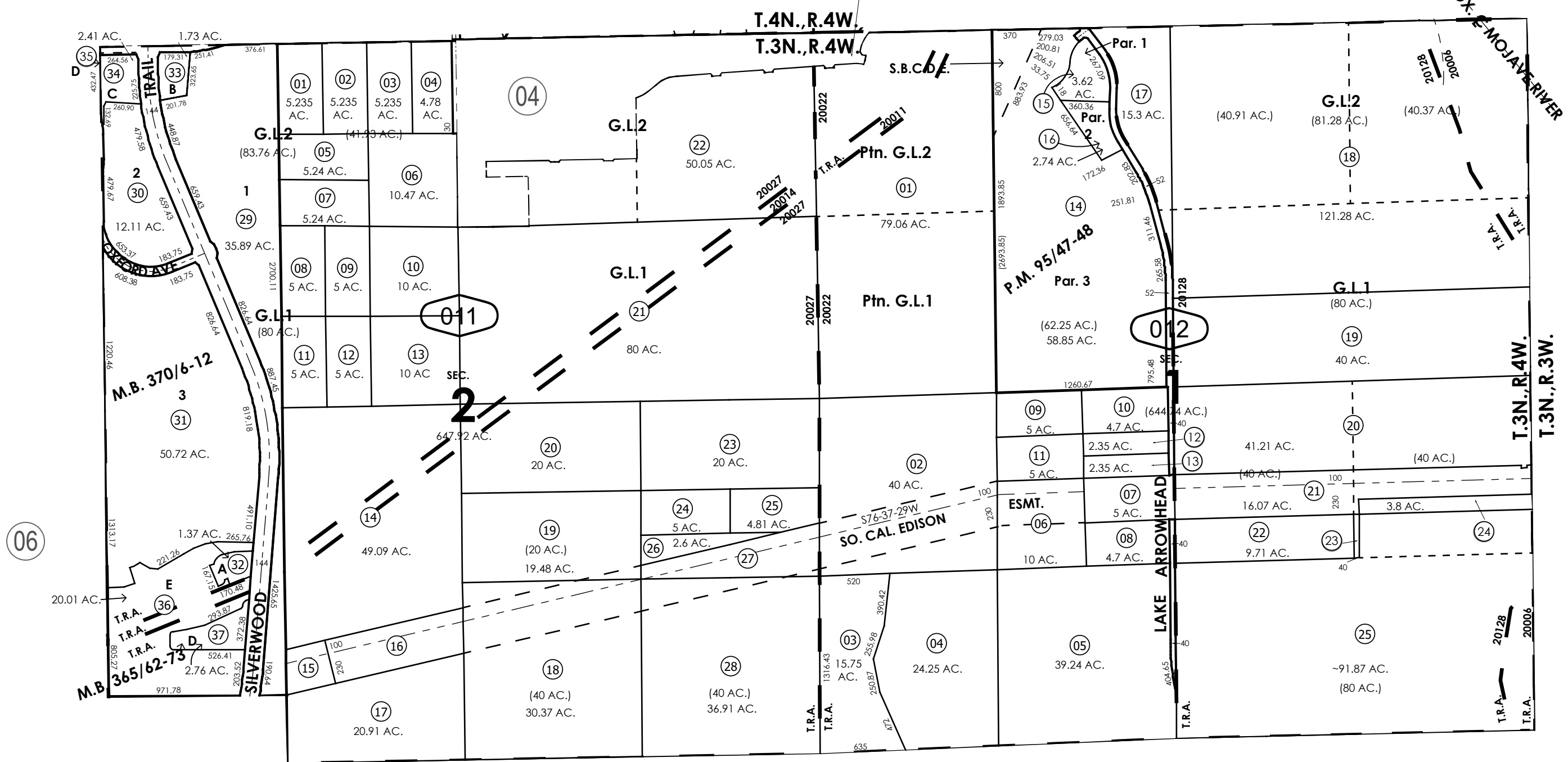
THIS MAP IS FOR THE PURPOSE
OF AD VALOREM TAXATION ONLY.



Fractional Sec.1&2, T.3N.,R.4W., S.B.B.&M.

City of Hesperia
Tax Rate Area
20006 20011 20014
20022 20027 20128

3027 - 01



07 - MAP 148-36-170, PAR. NO. 3

- 15 - MAP 148-36-169, PAR. NO. 5
- 16 - MAP 148-36-170, PAR. NO. 1
- 26 - MAP 148-36-170C, PAR. NO. 1
- 27 - MAP 148-36-170, PAR. NO. 2

Assessor's Map
Book 3027 Page 01
San Bernardino County

REVISED