

THIS MAP IS FOR THE PURPOSE
OF AD VALOREM TAXATION ONLY.



N.1/2 Fractional Sec.2, T.2N.,R.5E., S.B.B.&M.

Morongo Unified
Tax Rate Area
94038

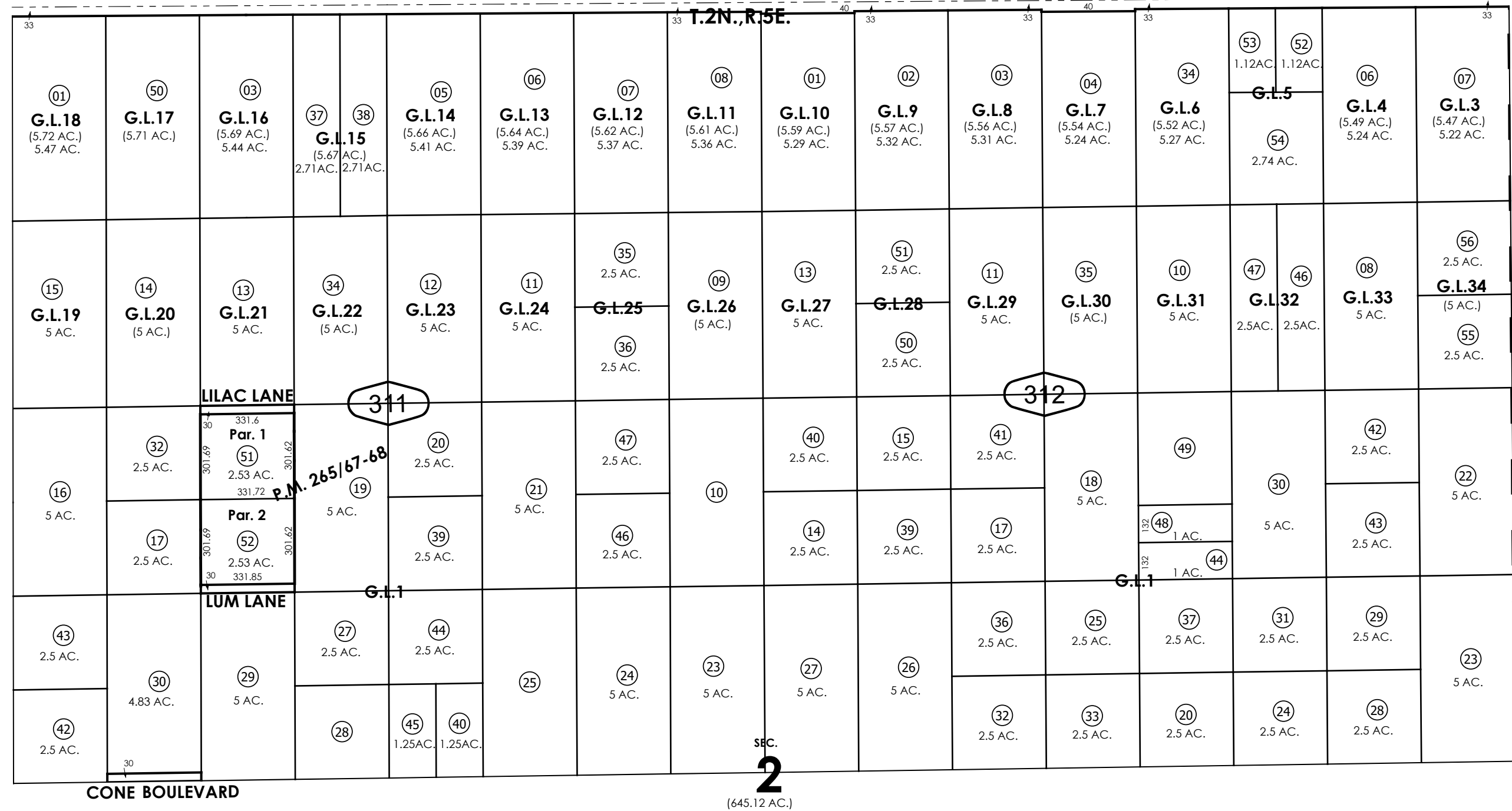
0629 - 31



0635
04

T.3N.,R.5E.

~~T.2N., R.5E.~~



SEC.

2

(645.12 AC.)

32

36

REVISED
12/13/24 CA
11/19/25 XM

Assessor's Map
Book 0629 Page 31
San Bernardino County