

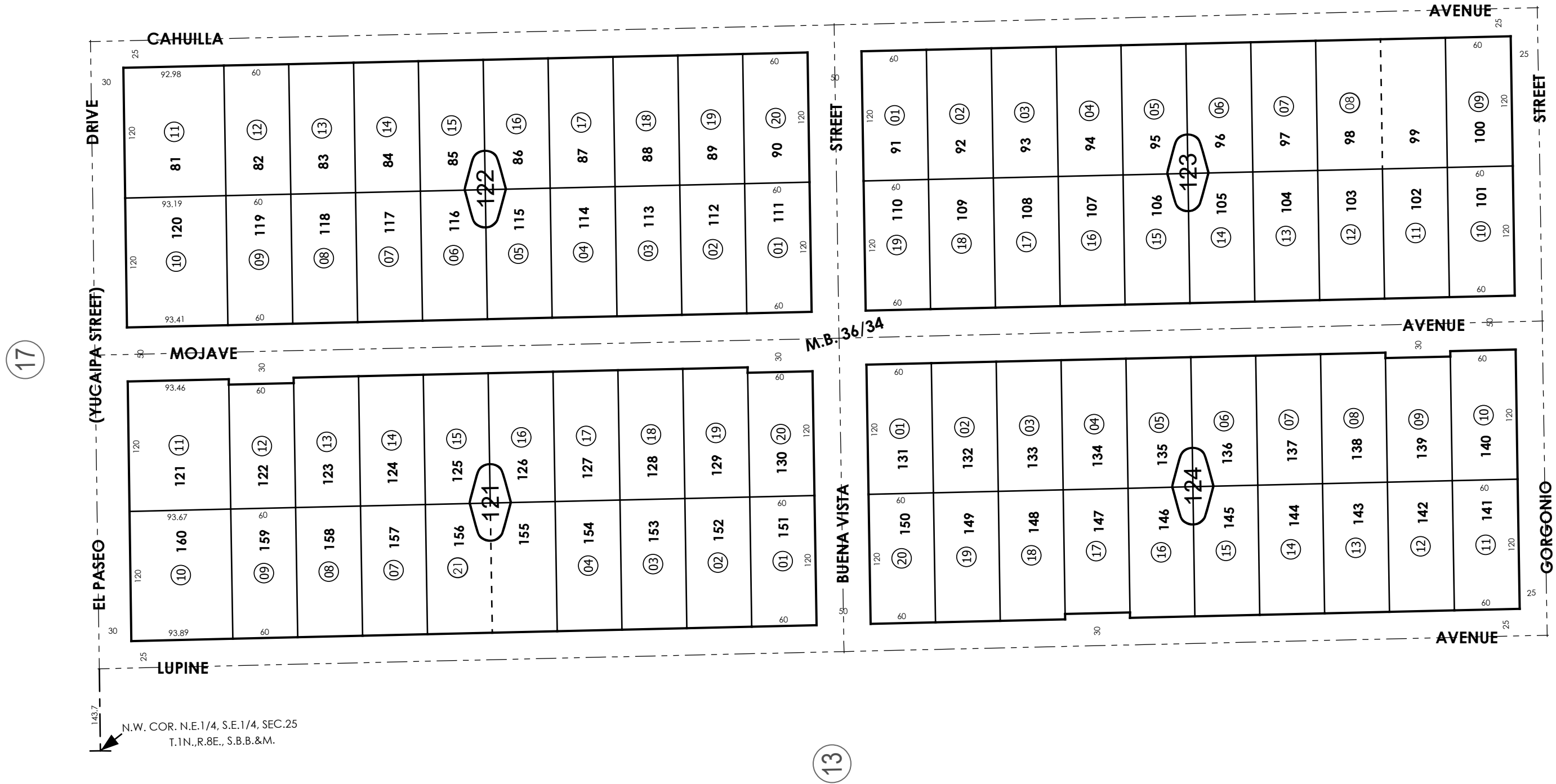
THIS MAP IS FOR THE PURPOSE
OF AD VALOREM TAXATION ONLY.



Ptn. Tract No. 2533, M.B. 36/34

City of Twentynine Palms
Tax Rate Area
19001

0615 - 12



REVISED
07/22/25 CA
10/06/25 CA

Ptn. S.E.1/4, Sec. 25
T.1N., R.8E.

Assessor's Map
Book 0615 Page 12
San Bernardino County

February 2005