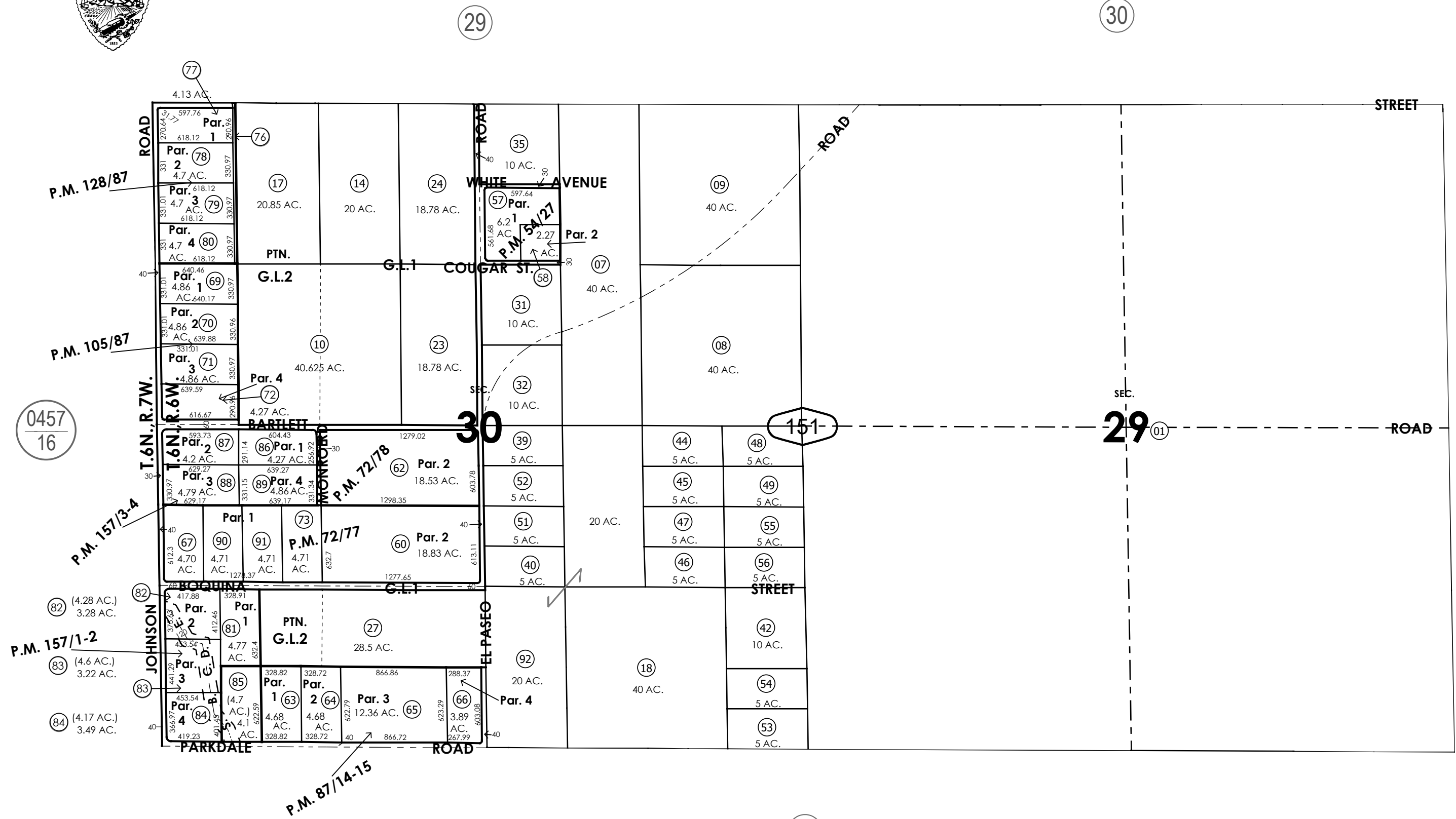


THIS MAP IS FOR THE PURPOSE  
OF AD VALOREM TAXATION ONLY.

Sec.29, & Fractional Sec.30, T.6N.,R.6W., S.B.B.&M.

Adelanto Unified  
Tax Rate Area  
51036

0458 - 15



February 2004

Parcel Map No. 3212, P.M. 54/27  
Ptn. Parcel Map No. 7304, P.M. 72/78  
Parcel Map No. 7303, P.M. 72/77  
Parcel Map No. 8422, P.M. 87/14-15  
Parcel Map No. 9811, P.M. 105/87  
Parcel Map No. 11073, P.M. 128/87

P.M. 12695, P.M. 157/1-2  
P.M. 12693, P.M. 157/3-4

Assessor's Map  
Book 0458 Page 15  
San Bernardino County

REVISED  
11/13/25 CA