

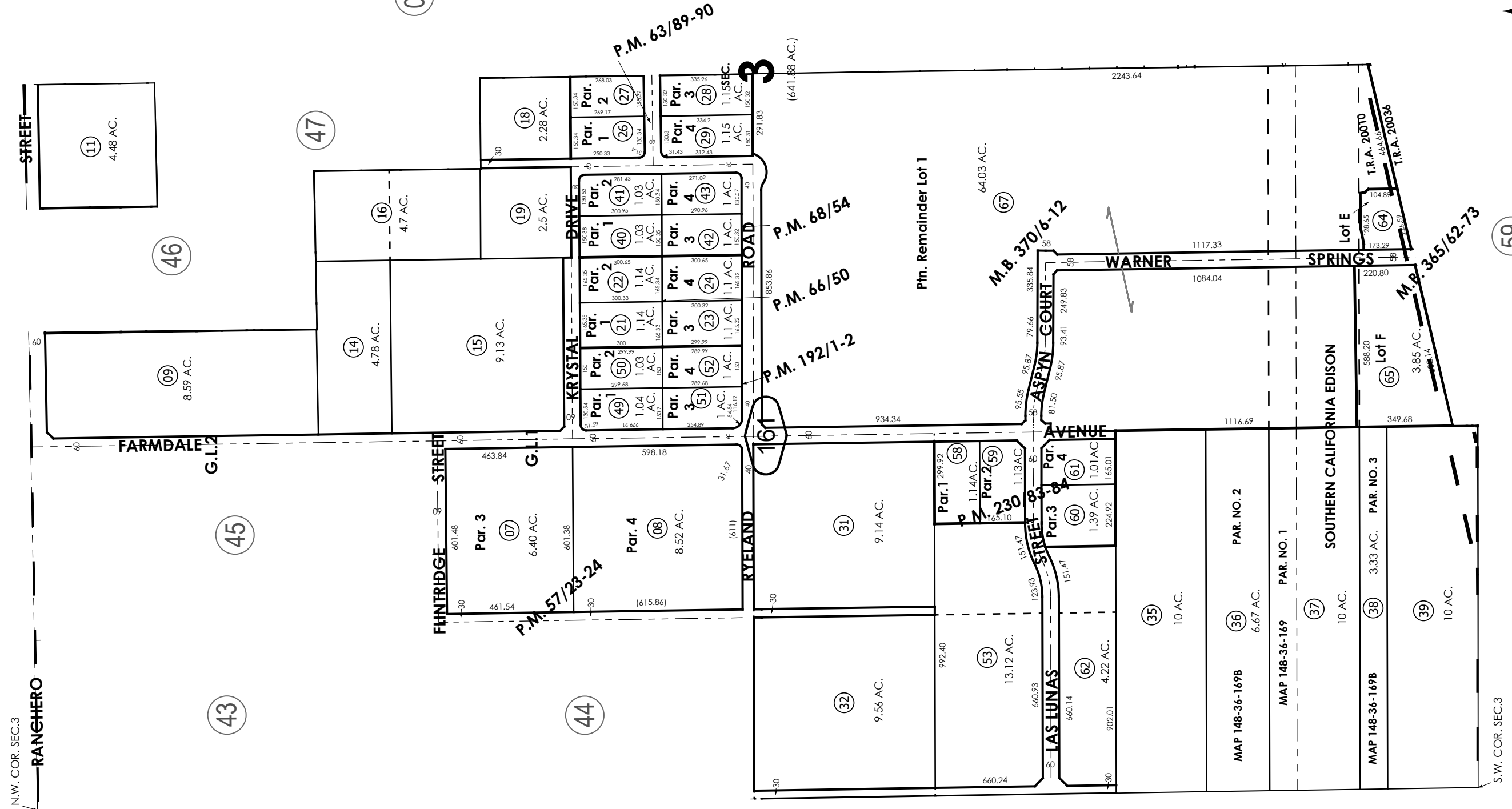
THIS MAP IS FOR THE PURPOSE
OF AD VALOREM TAXATION ONLY.



W.1/2, Fractional Sec.3, T.3N.,R.4W., S.B.B.&M.

City of Hesperia
Tax Rate Area
20010 20036

0397 - 16



Parcel Map No. 6580, P.M. 63/89-90
Parcel Map No. 6873, P.M. 66/50
Parcel Map No. 7032, P.M. 68/54
Parcel Map No. 15449, P.M. 192/1-2
Parcel Map No. 18136, P.M. 230/83-84
Ptn. Tract No. 18989-1, M.B. 365/62-73

Ptn. Tract No. 18989-2, M.B. 370/6-12
Ptn. Parcel Map No. 5781, P.M. 57/23-24

Assessor's Map
Book 0397 Page 16
San Bernardino County

REVISED
01/25/22 KC
11/02/23 KC
12/29/23 KA
09/16/25 BS