

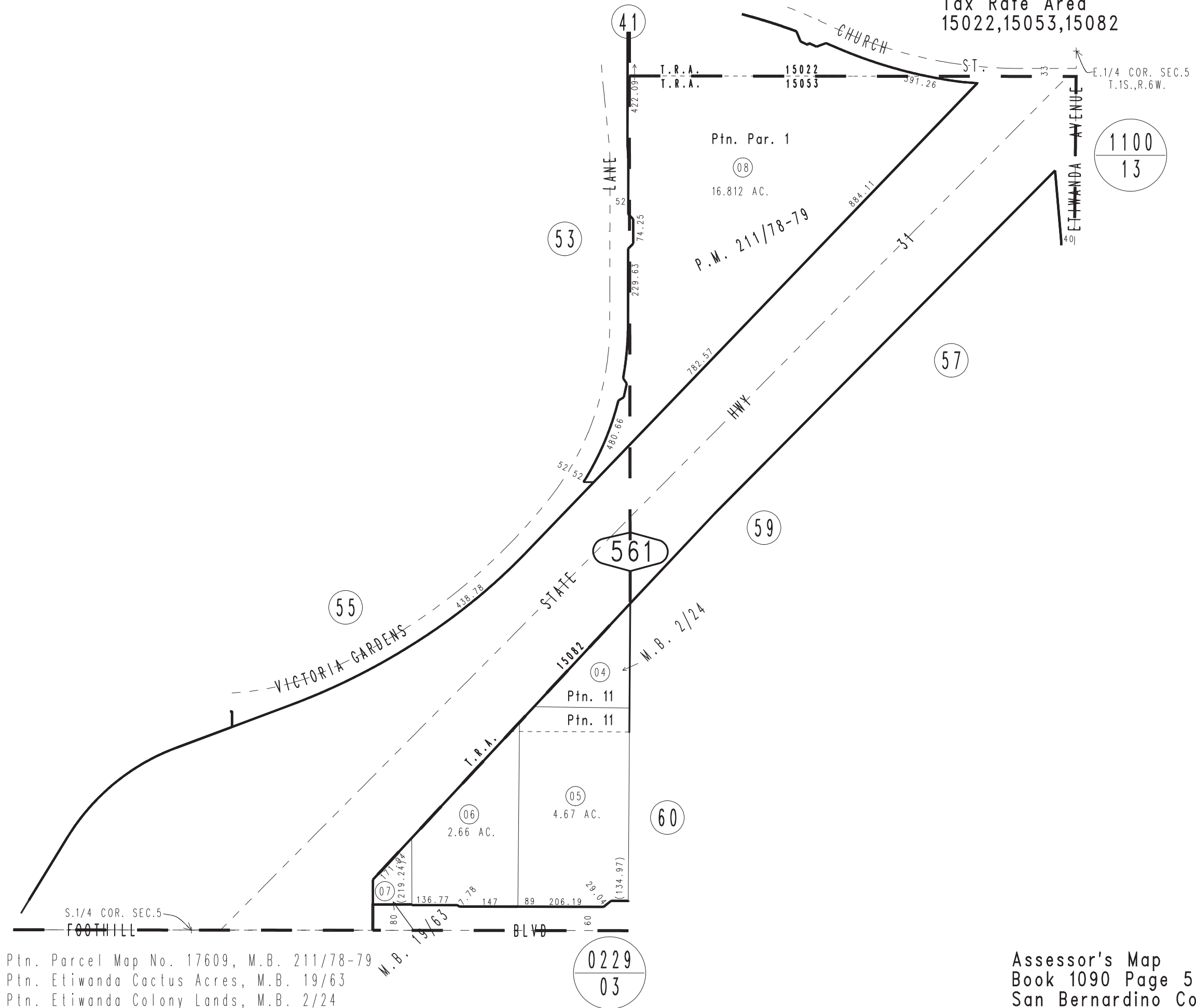
THIS MAP IS FOR THE PURPOSE
OF AD VALOREM TAXATION ONLY.



Ptn. S.E.1/4 Sec.5, T.1S.,R.6W., S.B.B.&M.

City of Rancho Cucamonga
Tax Rate Area
15022,15053,15082

1090 - 56



1" = 300'

November 2013 GW

Ptn. Parcel Map No. 17609, M.B. 211/78-79
Ptn. Etiwanda Cactus Acres, M.B. 19/63
Ptn. Etiwanda Colony Lands, M.B. 2/24

Assessor's Map
Book 1090 Page 56
San Bernardino County

REVISED
08/26/25 KC